



Connect Nebraska

Digital Opportunities

Broadband Availability and Mapping

Wednesday, Feb. 22, 2023

11:00 a.m. CT

Speaker:

- Cullen Robbins, Nebraska Public Service Commission



Connect Nebraska

Digital Opportunities

Please type your name in the chat. This will help us track attendance. If you would like to receive info on webinars, please also put your e-mail in the chat or e-mail anne.byers@nebraska.gov. Please mute your microphones.

The Nebraska State Digital Equity Planning initiative is part of the [Connect Nebraska Broadband Initiative](#). The planning grant is being led by the [Nebraska Information Technology Commission/Office of the CIO](#) in partnership with the [Nebraska Regional Officials Council \(NROC\)](#) and the [Nebraska Library Commission](#). This initiative was funded by a Digital Equity planning grant from the National Telecommunications and Information Administration (NTIA).



Recordings, slides and links to resources are posted at

- <https://broadband.nebraska.gov> and
- <https://nitc.nebraska.gov>

Upcoming Webinars

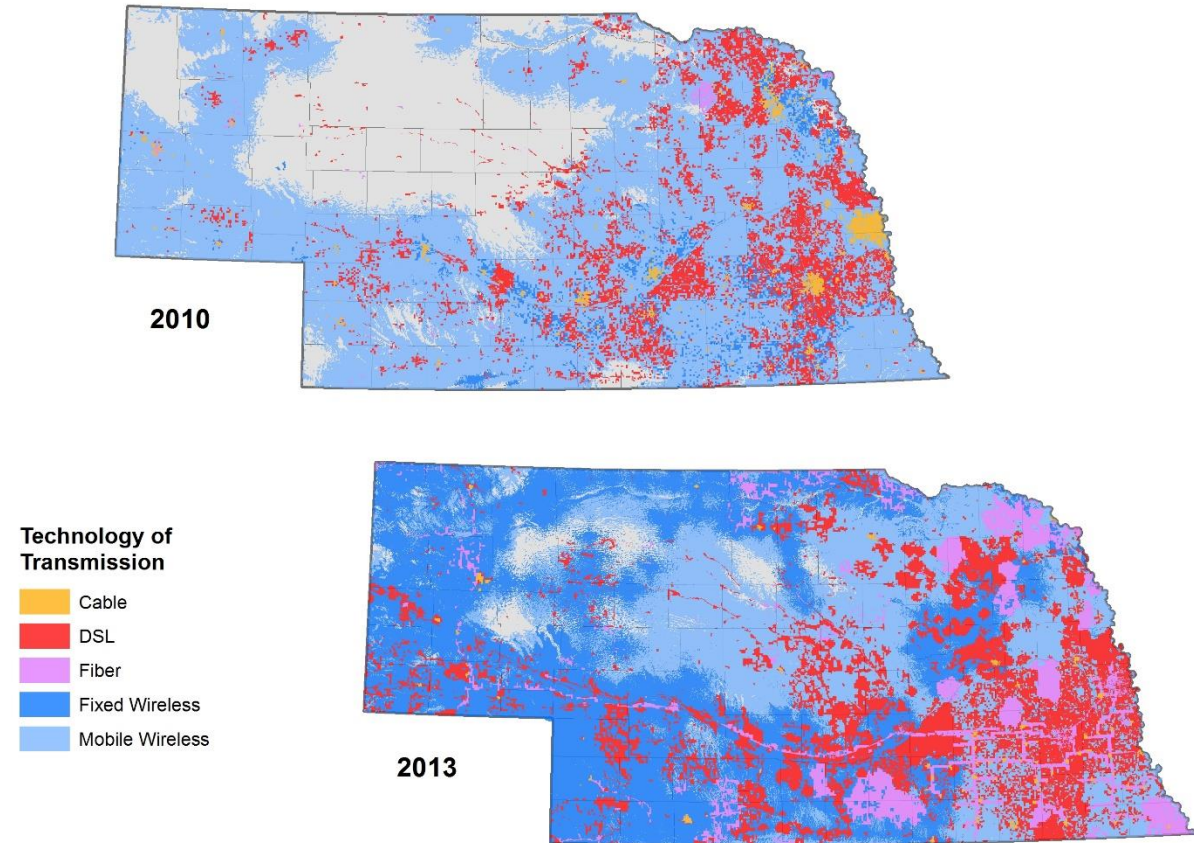
Date	Topic
March 8	Makerspaces and Digital Equity Organizations <ul style="list-style-type: none">• Michael Sauers, Do Space• David Martin, Nebraska Innovation Studio• Kristine Flyinghawk, Center for Rural Affairs
March 15	STEM and Technology Workforce Development <ul style="list-style-type: none">• Shonna Dorsey, Nebraska Tech Collaborative• Andrew Wang, Prairie STEM• Candace Miller, AIM Institute
March 22	Affordable Connectivity Program <ul style="list-style-type: none">• Anthony Butler, FCC• TBA

Broadband Availability, Mapping, and Funding

- History
- Mapping Process Today
- Mapping Resources Available
- Funding Resources

History

- Coordinated efforts started around 2010
- Utilized methodology in place up until last year
- Allowed comparisons over time, ability to quantify where it existed and how many people were potentially impacted

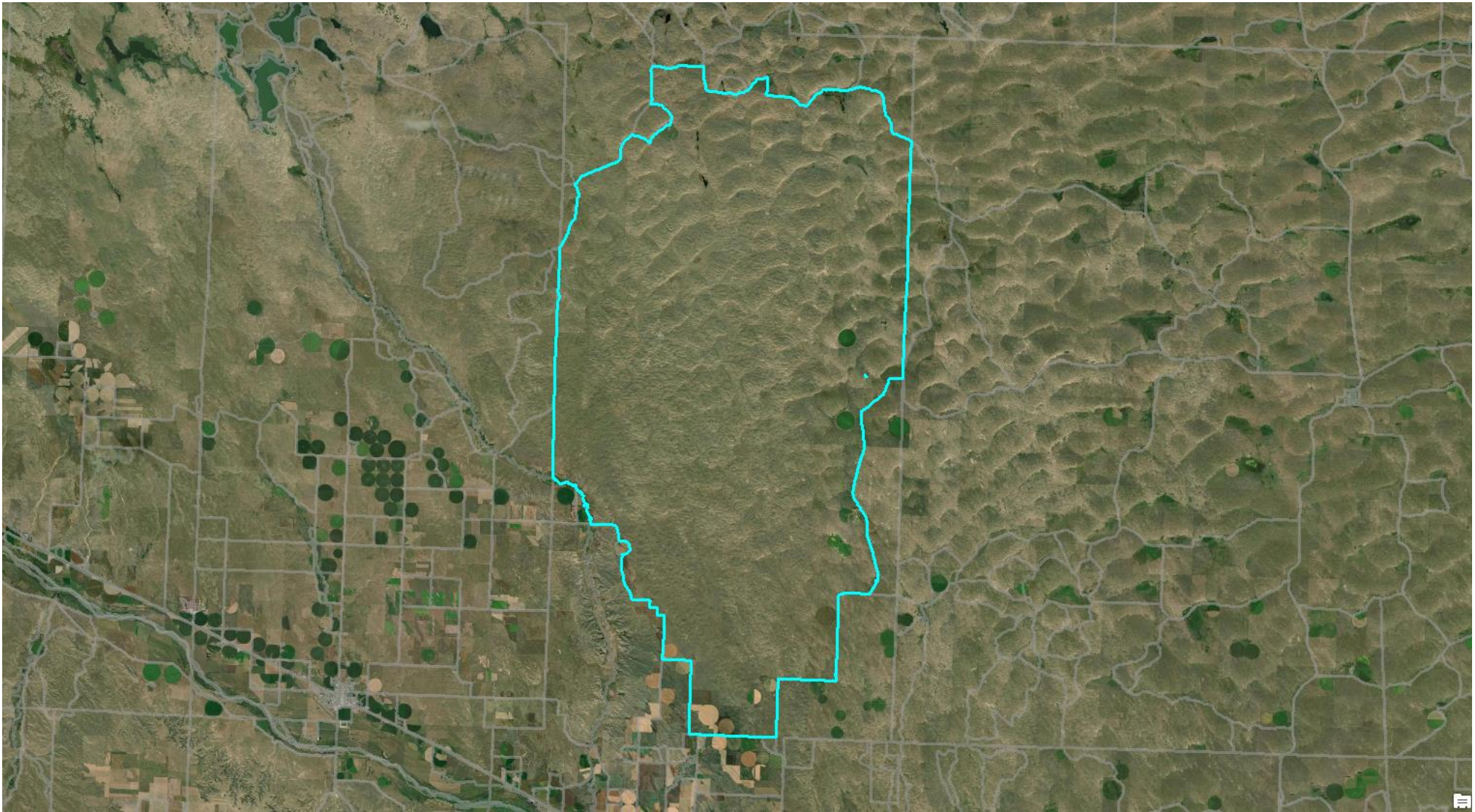


Census Blocks

- Definition
 - Statistical areas bounded by visible features such as roads, streams, and railroad tracks, and by nonvisible boundaries such as property lines, city, township, school district, county limits and short line-of-sight extensions of roads.



- 23 x 12 Miles
- Homes separated by 12 miles



Broadband Mapping Today

- FCC
 - Broadband Serviceable Location Fabric
 - Availability Reporting
 - Challenge Process
- Nebraska
 - State Broadband Map
 - New Map in development
 - Broadband Bridge Map

Mapping Resources

- FCC Broadband Map
 - Broadbandmap.fcc.gov
- Nebraska Broadband Map
 - Broadbandmap.Nebraska.gov
- Nebraska Broadband Bridge Map
 - <https://gis.ne.gov/portal/apps/webappviewer/index.html?id=9dc876af8ea541daa28d7dc82378e5ca>

Funding Sources

- NUSF
- Federal USF
- Broadband Bridge
- USDA ReConnect Grant
- Capital Projects Fund
- BEAD

Contact Information

Cullen Robbins

Nebraska Public Service Commission

Cullen.robbins@nebraska.gov

402-471-0230