

**Community Council**

**March 26, 2012**

**1:30-3:30**

**Lincoln**--Executive Building, 521 South 14<sup>th</sup> Street, Suite 103

**North Platte**—ESU 16, Distance Learning Room, 1221 West 17th Street

**Omaha**—1313 Farnam on the Mall, 2nd Floor, Conference Room 207

**Tentative Agenda**

1:30	Roll Call Notice of Posting of Agenda Notice of Nebraska Open Meetings Act Posting Approval of March 18, 2011 Minutes Public Comment
1:40	Library Broadband Builds Nebraska Communities—JoAnn McManus, Nebraska Library Commission
1:55	GIS Update—Nathan Watermeier, NITC
2:10	Membership
2:20	Broadband Map Update-- <ul style="list-style-type: none"><li>• Nebraska Broadband Map—<a href="http://broadbandmap.nebraska.gov">broadbandmap.nebraska.gov</a></li><li>• National Broadband Map—<a href="http://broadbandmap.gov">broadbandmap.gov</a></li></ul>
2:35	Broadband Planning Update— <a href="http://broadband.nebraska.gov">broadband.nebraska.gov</a> <ul style="list-style-type: none"><li>• Broadband Connecting Nebraska Conference—Oct. 2, 2012</li><li>• Case Studies</li><li>• Webinars</li><li>• Regional Planning Activities</li></ul>
2:55	<a href="#">Health Information Exchange Update</a> —Anne Byers
3:00	Adjourn

Meeting notice and agenda were posted on the Public Meeting and NITC websites on March 19, 2012.

## COMMUNITY COUNCIL

March 18, 2011, 9:30 a.m.

Lincoln--Executive Building, 521 South 14th Street, Suite 103  
Scottsbluff—Panhandle Education Center, 4502 Avenue I, High Plains Room

### PROPOSED MINUTES

#### MEMBERS PRESENT:

Chris Anderson, City of Central City  
Rod Armstrong, AIM Institute  
Roger Hahn, Nebraska Information Network  
Darla Heggem, Twin Cities Economic Development  
John Jordison, Great Plains Communications  
Tim O'Brien, Department of Economic Development  
Jerry Vap, Nebraska Public Service Commission

#### ROLL CALL, NOTICE OF POSTING OF AGENDA, NOTICE OF NEBRASKA OPEN MEETINGS ACT POSTING

In the absence of the Chair, Anne Byers conducted the meeting. There were seven members present at the time of roll call. A quorum existed to conduct official business. The meeting notice and agenda were posted on the Public Meeting and NITC websites on March 3, 2011.

#### APPROVAL OF MARCH 23, 2009 AND JULY 19, 2010 MINUTES

Mr. Anderson arrived to the meeting.

**Mr. Vap moved to approve the [March 23, 2009](#) and [July 19, 2010](#) minutes as presented. Mr. O'Brien seconded. Roll call vote: Anderson-Yes, Armstrong-Yes, Hahn-Yes, Heggem-Yes, Jordison-Yes, O'Brien-Yes, and Vap-Yes. Results: Yes-7, No-0, Abstain-0. Motion carried.**

#### PUBLIC COMMENT

There was no public comment.

Ms. Modrell arrived to the meeting.

#### BROADBAND MAP UPDATE

Gene Hand and Don Gray, Nebraska Public Service Commission

Mr. Hand and Mr. Gray provided updates on the Nebraska map ([broadbandmap.nebraska.gov](http://broadbandmap.nebraska.gov)) and the federal map ([broadbandmap.gov](http://broadbandmap.gov)). Below is historical information about the project.

Fall of 2008:

- Congress enacts the Broadband Data Improvement Act (BDIA).
- Intent is to provide funding to eligible entities in each state for mapping broadband and to support planning activities.
- Funding was not appropriated with enactment of the BDIA.

February 2009:

- Congress enacts the American Recovery and Reinvestment Act (ARRA - the Stimulus Bill) and appropriates \$350 million to fund the BDIA for five years.
- \$7.4 billion was appropriated to fund grants/loans for broadband infrastructure projects funded through the National Telecommunications and Information Administration (NTIA) (Dept. of Commerce) and Rural Utilities Service (RUS) (Dept. of Agriculture).

- The State designees were notified by the NTIA that the original grant program of five years was to be reduced to a two year grant with the possibility of three additional years of funding at a later date.

January 2010:

- NTIA awarded NPSC a grant of \$2.1 million for years 1 and 2 with \$1.6 million allocated for the mapping project and \$0.5 million allocated for the planning project.

May 2010:

- NTIA notified Grantees that they were now prepared to entertain supplemental application requests for years 3 - 5 of the original grant period authorized by Congress.
- The NPSC and the Planning Team had 30 days to prepare the supplemental grant proposal.

September 2010:

- NPSC was notified by the NTIA that Nebraska had been awarded a supplemental grant of approximately \$3.5 million for years 3-5 with \$1.5 million allocated for continuation of the mapping effort and \$2.0 million allocated for the planning effort.
- Revised budget for the supplemental grant was submitted on February 21, 2011.
- NPSC is awaiting final approval of the award by the NTIA.

The project's biggest challenge is getting data from ISPs in a regular consistent format per the federal requirements. The NTIA is using census block data whereas providers may use street addresses or some other means of gathering data. The national and the Nebraska maps utilize layers of data. For example, Layer 1 consists of community anchor institutions which includes libraries and schools but in the future could also include other entities.

## **BROADBAND PLANNING UPDATE**

Connie Hancock, University of Nebraska, Panhandle Research & Extension Center

*Forums.* The project will be conducting regional broadband forums. All forums will be held from 1-4 p.m. on the following dates and locations:

- March 23, Norfolk: Learning Center, 801 East Benjamin Avenue
- March 30, Gering: Civic Center, 1050 M Street
- March 31, Valentine: 4-H Building, 120 North Green Street
- April 6, North Platte: Quality Inn Convention Center, 2102 South Jeffers
- April 7, McCook: Mid-Plains Enterprise Center, 1205 East Third
- April 13, Lincoln: Embassy Suites, 1040 P Street
- April 14, Minden: Opera House, 322 East Fifth Street
- April 28, Omaha: Greater Omaha Chamber of Commerce, 1301 Harney Street

Ms. Hancock distributed extra flyers for members to take and distribute to other persons who may be interested. Local media have been contacted. State senators have been invited as well. The forums are being conducted to:

- Begin discussions about how their region can increase adoption and utilization of broadband services;
- Share how residents in their region are currently using and how the view broadband service through the results of a statewide survey;
- Showcase broadband mapping data from their regional as well as across the state; and
- Create a regional planning team to work on a regional technology plan.

Regional plans will be included in the statewide plan which will be completed in 2012. In addition to the regional teams, there will also be focus groups on agriculture, health care, tribal lands, and diverse minority populations. A portal will be created for the public to access information about broadband planning.

*Workbook and Other Activities.* The project would like the Community Council to review and provide their recommendations on the assessment tool as well as the statewide plan when it is developed. After regional teams are established, there will be funding available for them to conduct regional workshops. Webinars are being developed to raise awareness, adoption and utilization of broadband services in Nebraska.

## **HEALTH INFORMATION EXCHANGE**

Anne Byers, NITC

Anne Byers gave an overview of Nebraska's health information exchange efforts. In May 2010, Nebraska received a federal grant of 6.8 million dollars for Nebraska's health information exchange. In order to receive funding, Nebraska had to submit strategic and operational eHealth plans. Both of these are available via the NITC website. Rather than create a whole new system, Nebraska decided to build upon and integrate existing health initiatives. Grant funds will be used to expand services to additional providers and to expand functionality.

**NeHII**, Connie Pratt

NeHII is the acting as the lead health information exchange for Nebraska. Ms. Pratt distributed an updated fact sheet. The project began in 2005. NeHII is the statewide integrator and lead health information exchange. Currently 15 hospitals and over 1,300 providers are participating in NeHII. Creighton University Medical Center will go live on April 25<sup>th</sup>. NeHII is currently working with the State of Nebraska to exchange immunization data.

**eBHIN (Electronic Behavior Health Information Network)**, Wende Baker

Nebraska is one of the few states to establish a separate behavioral health information exchange. Region V has been working on eHealth records effort for quite some time. Stakeholders have also been involved from the very beginning. The biggest hurdle right now is the development of a consent form that will allow them to operate in the HIE network and still meet HIPAA standards for health care professional and the patient. Other behavioral health regions are also interested in participating. eBHIN is in the process of setting up a website and is expected to go-live April 26, 2011. Ms. Baker thanked Ms. Byers, the NITC and the ONC for their help with this effort.

## **MEMBERSHIP**

Anne Byers, Community I.T. Manager

The Community Council has 11 active members. Members were encouraged to recommend persons to Ms. Byers. Currently, the council needs representatives from the libraries and local government.

Mr. Hahn announced that he will be retiring on August 31<sup>st</sup>. After that time, the NIN board will decide to either hire a replacement or close the doors.

## **ADJOURNMENT**

The meeting was adjourned at 11:45 a.m.

The meeting minutes were taken by Lori Lopez Urdiales and reviewed by Anne Byers of the Office of the CIO/NITC.

<b>Rural and Community IT Development/Workforce Development</b>	
<b>Members</b>	<b>Alternates</b>
Rod Armstrong AIM Institute, Omaha	Tim Erickson
Linda Fettig Rural Development Commission	
Norene Fitzgerald	
Darla Heggem Twin Cities Development, Scottsbluff-Gering	
John Jordison Great Plains Communications	
Joan Modrell Department of Labor	
Tim O'Brien Nebraska Department of Economic Development	
<b>Local Government and Libraries</b>	
<b>Members</b>	<b>Alternates</b>
Chris Anderson City of Central City	
Phil Green (nominated) City of Blair	
<b>At Large</b>	
<b>Members</b>	<b>Alternates</b>
Jerry Vap (indefinite) Public Service Commission	Gene Hand Public Service Commission

# Nebraska eHealth

## Stakeholder Update

January 2012

### Progress of eHealth in 2011

On March 15, 2010, the Nebraska Information Technology Commission received \$6.8 million in funding from the U.S. Department of Health and Human Services, Office of the National Coordinator for Health IT through the HITECH ACT enacted as part of the American Recovery and Reinvestment Act of 2009. The Nebraska Information Technology Commission is partnering with NeHII (Nebraska Health Information Initiative), eBHIN (Electronic Behavioral Health Information Network, the Nebraska Department of Health and Human Services Division of Public Health, and the Nebraska Statewide Telehealth Network to implement the cooperative agreement.

Over the past seven months, NeHII has begun implementation activities with 1 new hospital—Regional West Medical Center in Scottsbluff—and recruited 19 hospitals, including 15 Critical Access Hospitals, Boys Town National Research Hospital, Columbus Community Hospital, BryanLGH West and BryanLGH East. When these hospital implementations are completed in 2012, approximately two-thirds of the state’s hospital beds will be covered by NeHII. NeHII now has over 2,000 users up from 1,288 on Dec. 31, 2010.

NeHII and the Nebraska Department of Health and Services Division of Public Health have been working with NeHII’s vendor, Axolotl, to exchange information between the State of Nebraska’s immunization registry, NESIIS, and NeHII. Phase I of the exchange is operational, allowing the exchange of data from NeHII’s EHR users to the immunization registry. Work continues on the other two phases of the project. NeHII, Axolotl, and the NDHSS Division of Public Health are also working on the exchange of information between NeHII and the State’s disease reporting system (NEDSS) and the State’s syndromic surveillance system.

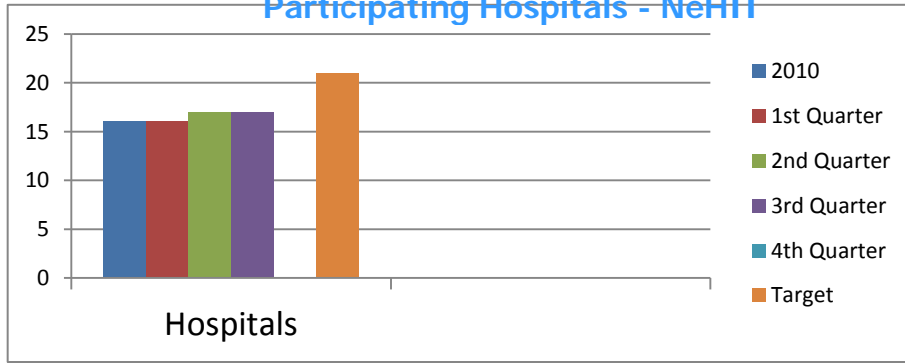
NeHII began a pilot of the Direct project in late 2011 for results delivery with Pathology Services in North Platte.

Nebraska is also developing one of the country’s first behavioral health information exchanges. eBHIN went live with its EHR/EPM system and data upload to Magellan, the State’s administrative services organization, in the summer of 2011 in southeast Nebraska. In December 2011, behavioral health providers in Region I in the Panhandle went live with the EHR/EPM system. The HIE will go live in both regions early in 2012.

#### Inside this issue:

Participating Hospitals	2
Users and Plan Participation	3
NeHII Participating Labs	4
Providers Submitting to Immunization Registry	6
Public Health Reporting	7
E-Prescribing Adoption	9
Contacts	10

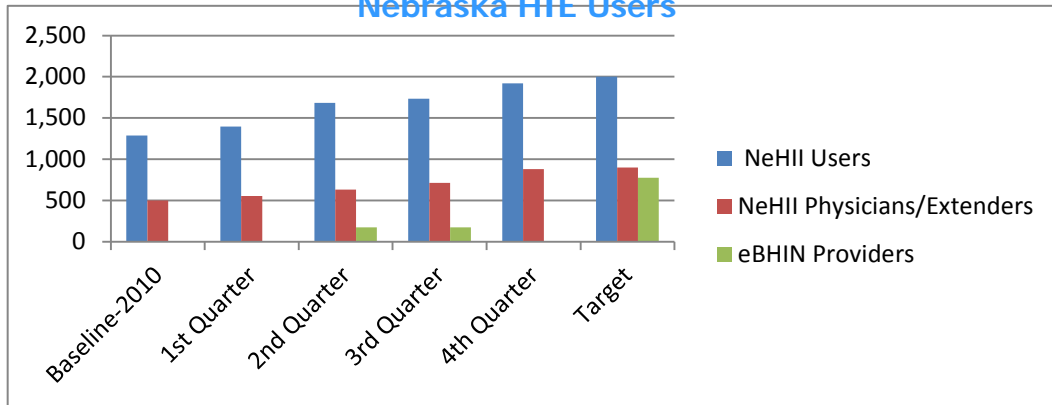
## Participating Hospitals - NeHII



Baseline—2010	1 <sup>st</sup> Quarter	2 <sup>nd</sup> Quarter	3 <sup>rd</sup> Quarter	4 <sup>th</sup> Quarter	Target-2011
<b>NeHII</b> 16 hospitals* 13% of Nebraska hospitals 39% of hospital beds	16 hospitals (13 Nebraska & 3 Iowa)	17 hospitals (14 Nebraska & 3 Iowa)	17 hospitals (14 Nebraska & 3 Iowa)  *14 Critical Access Hospitals, 2 regional hospitals and 1 research hospital have signed participation agreements in Q3	17 hospitals (14 Nebraska & 3 Iowa) with Regional West Medical Center in implementation phase. 19 hospitals, including 15 Critical Access Hospitals, Boys Town National Research Hospital, Columbus Community Hospital, BryanLGH West and BryanLGH East have signed participation agreements.	NeHII 21 hospitals 22% of Nebraska hospitals 45% of hospital beds  eBHIN 1 hospital

1 <sup>st</sup> Quarter	2 <sup>nd</sup> Quarter	3 <sup>rd</sup> Quarter	4 <sup>th</sup> Quarter
<ul style="list-style-type: none"> <li>• Bellevue Medical Center - Bellevue, NE</li> <li>• Bergan Mercy Hospital - Omaha, NE</li> <li>• Children’s Hospital and Medical Center - Omaha, NE</li> <li>• Great Plains Regional Medical Center - Omaha, NE</li> <li>• Lakeside Hospital - Omaha, NE</li> <li>• Immanuel Hospital - Omaha, NE</li> <li>• Mary Lanning Memorial Hospital - Hastings, NE</li> <li>• Memorial Hospital -Schuyler, NE</li> <li>• Methodist Hospital - Omaha, NE</li> <li>• Methodist Women’s Hospital – Omaha, NE</li> <li>• Midlands Hospital -Papillion, NE</li> <li>• Nebraska Spine Hospital - Omaha, NE</li> <li>• The Nebraska Medical Center - Omaha, NE</li> <li>• Community Memorial Hospital - Missouri Valley, IA</li> <li>• Mercy Hospital - Corning, IA</li> <li>• Mercy Hospital - Council Bluffs, IA</li> </ul>	<ul style="list-style-type: none"> <li>• Bellevue Medical Center - Bellevue, NE</li> <li>• Bergan Mercy Hospital - Omaha, NE</li> <li>• Children’s Hospital and Medical Center - Omaha, NE</li> <li>• Creighton University and Medical Center, Omaha, NE</li> <li>• Great Plains Regional Medical Center - Omaha, NE</li> <li>• Lakeside Hospital - Omaha, NE</li> <li>• Immanuel Hospital - Omaha, NE</li> <li>• Mary Lanning Memorial Hospital - Hastings, NE</li> <li>• Memorial Hospital -Schuyler, NE</li> <li>• Methodist Hospital - Omaha, NE</li> <li>• Methodist Women’s Hospital – Omaha, NE</li> <li>• Midlands Hospital -Papillion, NE</li> <li>• Nebraska Spine Hospital - Omaha, NE</li> <li>• The Nebraska Medical Center - Omaha, NE</li> <li>• Community Memorial Hospital - Missouri Valley, IA</li> <li>• Mercy Hospital - Corning, IA</li> <li>• Mercy Hospital - Council Bluffs, IA</li> </ul>	<ul style="list-style-type: none"> <li>• Bellevue Medical Center - Bellevue, NE</li> <li>• Bergan Mercy Hospital - Omaha, NE</li> <li>• Children’s Hospital and Medical Center - Omaha, NE</li> <li>• Creighton University and Medical Center, Omaha, NE</li> <li>• Great Plains Regional Medical Center - Omaha, NE</li> <li>• Lakeside Hospital - Omaha, NE</li> <li>• Immanuel Hospital - Omaha, NE</li> <li>• Mary Lanning Memorial Hospital - Hastings, NE</li> <li>• Memorial Hospital -Schuyler, NE</li> <li>• Methodist Hospital - Omaha, NE</li> <li>• Methodist Women’s Hospital – Omaha, NE</li> <li>• Midlands Hospital -Papillion, NE</li> <li>• Nebraska Spine Hospital - Omaha, NE</li> <li>• The Nebraska Medical Center - Omaha, NE</li> <li>• Community Memorial Hospital - Missouri Valley, IA</li> <li>• Community Memorial Hospital - Missouri Valley, IA</li> <li>• Mercy Hospital - Corning, IA</li> <li>• Mercy Hospital - Council Bluffs, IA</li> </ul>	<ul style="list-style-type: none"> <li>• Bellevue Medical Center - Bellevue, NE</li> <li>• Bergan Mercy Hospital - Omaha, NE</li> <li>• Children’s Hospital and Medical Center - Omaha, NE</li> <li>• Creighton University and Medical Center, Omaha, NE</li> <li>• Great Plains Regional Medical Center - Omaha, NE</li> <li>• Lakeside Hospital - Omaha, NE</li> <li>• Immanuel Hospital - Omaha, NE</li> <li>• Mary Lanning Memorial Hospital - Hastings, NE</li> <li>• Memorial Hospital -Schuyler, NE</li> <li>• Methodist Hospital - Omaha, NE</li> <li>• Methodist Women’s Hospital – Omaha, NE</li> <li>• Midlands Hospital -Papillion, NE</li> <li>• Nebraska Spine Hospital - Omaha, NE</li> <li>• The Nebraska Medical Center - Omaha, NE</li> <li>• Community Memorial Hospital - Missouri Valley, IA</li> <li>• Mercy Hospital - Corning, IA</li> <li>• Mercy Hospital - Council Bluffs, IA</li> <li>• 19 hospitals, including 15 Critical Access Hospitals, Boys Town National Research Hospital, Columbus Community Hospital, BryanLGH West and BryanLGH East have signed participation agreements.</li> </ul>

### Nebraska HIE Users

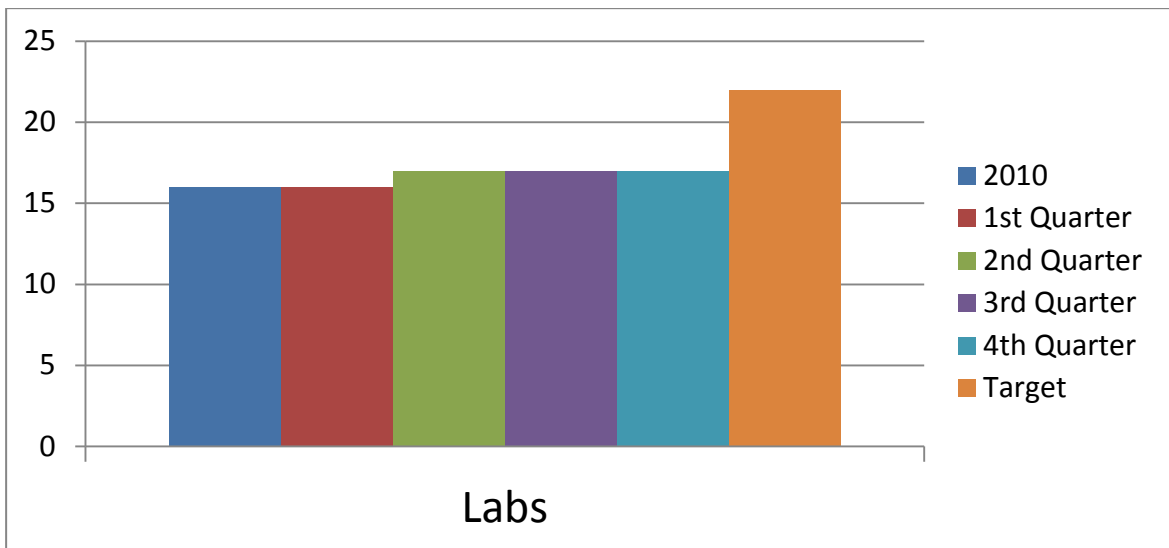


Baseline-2010	1 <sup>st</sup> Quarter 2011	2 <sup>nd</sup> Quarter 2011	3 <sup>rd</sup> Quarter 2011	4 <sup>th</sup> Quarter 2011	Target 2011
<p>NeHII 1,288 total users, including physicians, mid-levels, nurses, pharmacists, and staff</p> <p>500 Physician and Physician Extenders out of 4,266 in state 12% of physicians and physician extenders</p>	<p>1,396 total users, including physicians, mid-levels, nurses, pharmacists, and staff</p> <p>554 physician and physician extenders</p>	<p>1,683 total users including physicians, mid-levels, nurses, pharmacists and staff</p> <p>633 physician and physician extenders</p> <p>eBHIN – 175 providers</p> <p>4% of behavioral health providers</p>	<p>1,773 total users including physicians, mid-levels, nurses, pharmacists and staff</p> <p>714 physician and physician extenders</p> <p>eBHIN – 175 providers</p> <p>4% of behavioral health providers</p>	<p>1,922 total users including physicians, mid-levels, nurses, long-term care providers, and home health)</p> <p>880 physicians and physician extenders</p> <p>eBHIN – 259 providers</p>	<p>2,000 total users, including physicians, mid-levels, nurses, pharmacists, and staff</p> <p>900 physicians and physician extenders out of 4,266 in state</p> <p>21% of physicians and physician extenders</p> <p>eBHIN 776 providers out of 3,929 behavioral health providers</p> <p>20% of behavioral health providers</p>

### Health Plan Participation - NeHII

Baseline-2010	1 <sup>st</sup> Quarter 2011	2 <sup>nd</sup> Quarter 2011	3 <sup>rd</sup> Quarter 2011	4 <sup>th</sup> Quarter 2011	Target 2011
1 health plan (BlueCross BlueShield of Nebraska) currently participates	1 health plan	1	1	1	1

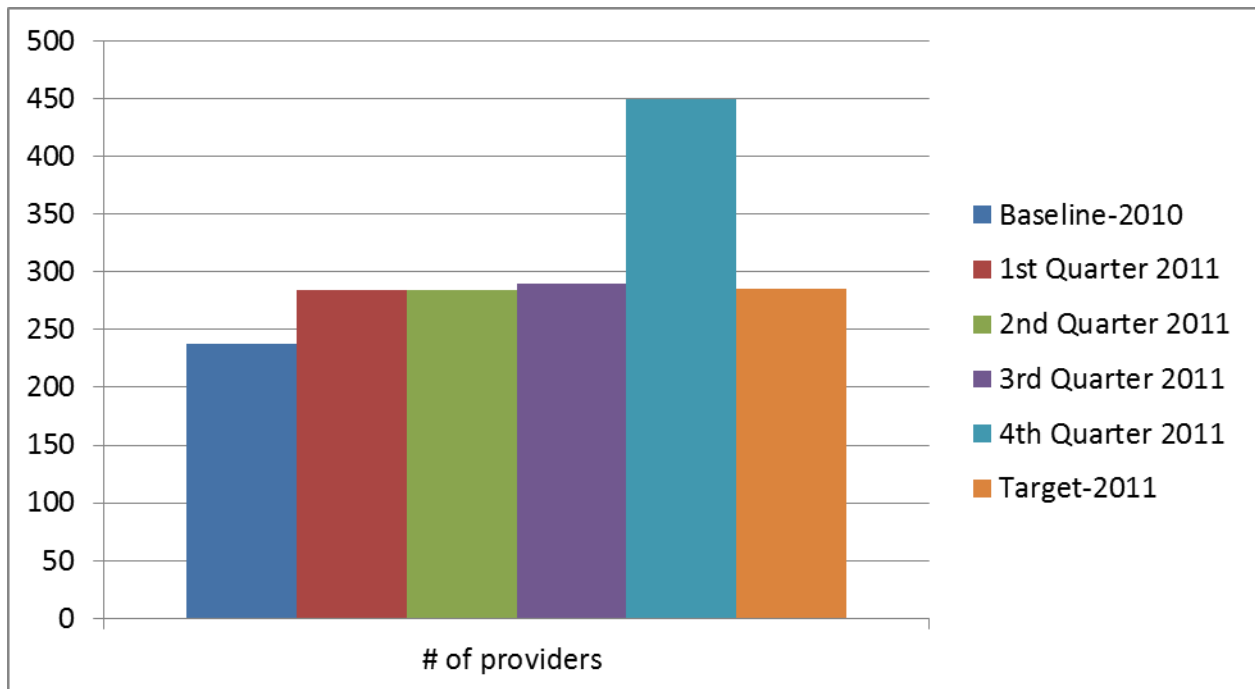




Baseline-2010	1 <sup>st</sup> Quarter 2011	2 <sup>nd</sup> Quarter 2011	3 <sup>rd</sup> Quarter 2011	4 <sup>th</sup> Quarter 2011	Target 2011
<p>NeHII</p> <p>0 out of six independent reference labs</p> <p>10 hospital labs out of 90 hospital labs</p> <p>10% of 96 hospital and major independent reference labs</p>	<p>16 hospitals (13 Nebraska &amp; 3 Iowa)</p>	<p>17 hospitals (14 Nebraska &amp; 3 Iowa)</p>	<p>17 hospitals (14 Nebraska &amp; 3 Iowa)</p> <p>*14 Critical Access Hospitals, 2 regional hospitals and 1 research hospital have signed participation agreements in Q3</p>	<p>17 hospitals (14 Nebraska &amp; 3 Iowa)</p> <p>*14 Critical Access Hospitals, 2 regional hospitals and 1 research hospital have signed participation agreements in Q3</p>	<p>NeHII</p> <p>1 out of six independent reference labs</p> <p>21 hospital labs out of 90 hospital labs</p> <p>21% of hospital and independent reference labs</p> <p>eBHII</p> <p>N/A. eBHII will most likely go through NeHII for laboratory information.</p>

## Specific Laboratory Participation—NeHII

1 <sup>st</sup> Quarter 2011	2 <sup>nd</sup> Quarter 2011	3 <sup>rd</sup> Quarter 2011	4 <sup>th</sup> Quarter 2011
<ul style="list-style-type: none"> <li>• Bellevue Medical Center - Bellevue, NE</li> <li>• Bergan Mercy Hospital - Omaha, NE</li> <li>• Children's Hospital and Medical Center - Omaha, NE</li> <li>• Great Plains Regional Medical Center – North Platte, NE</li> <li>• Lakeside Hospital - Omaha, NE</li> <li>• Immanuel Hospital - Omaha, NE</li> <li>• Mary Lanning Memorial Hospital - Hastings, NE</li> <li>• Memorial Hospital - Schuyler, NE</li> <li>• Methodist Hospital - Omaha, NE</li> <li>• Methodist Women's Hospital – Omaha, NE</li> <li>• Midlands Hospital - Papillion, NE</li> <li>• Nebraska Spine Hospital - Omaha, NE</li> <li>• The Nebraska Medical Center - Omaha, NE</li> <li>• Community Memorial Hospital - Missouri Valley, IA</li> <li>• Mercy Hospital, Corning, IA</li> <li>• Mercy Hospital – Council Bluffs, IA</li> </ul>	<ul style="list-style-type: none"> <li>• Bellevue Medical Center - Bellevue, NE</li> <li>• Bergan Mercy Hospital - Omaha, NE</li> <li>• Children's Hospital and Medical Center - Omaha, NE</li> <li>• Creighton University and Medical Center, Omaha, NE</li> <li>• Great Plains Regional Medical Center – North Platte, NE</li> <li>• Lakeside Hospital - Omaha, NE</li> <li>• Immanuel Hospital - Omaha, NE</li> <li>• Mary Lanning Memorial Hospital - Hastings, NE</li> <li>• Memorial Hospital - Schuyler, NE</li> <li>• Methodist Hospital - Omaha, NE</li> <li>• Methodist Women's Hospital – Omaha, NE</li> <li>• Midlands Hospital - Papillion, NE</li> <li>• Nebraska Spine Hospital - Omaha, NE</li> <li>• The Nebraska Medical Center - Omaha, NE</li> <li>• Community Memorial Hospital - Missouri Valley, IA</li> <li>• Mercy Hospital - Corning, IA</li> <li>• Mercy Hospital - Council Bluffs, IA</li> </ul>	<ul style="list-style-type: none"> <li>• Bellevue Medical Center - Bellevue, NE</li> <li>• Bergan Mercy Hospital - Omaha, NE</li> <li>• Children's Hospital and Medical Center - Omaha, NE</li> <li>• Creighton University and Medical Center, Omaha, NE</li> <li>• Great Plains Regional Medical Center – North Platte, NE</li> <li>• Lakeside Hospital - Omaha, NE</li> <li>• Immanuel Hospital - Omaha, NE</li> <li>• Mary Lanning Memorial Hospital - Hastings, NE</li> <li>• Memorial Hospital - Schuyler, NE</li> <li>• Methodist Hospital - Omaha, NE</li> <li>• Methodist Women's Hospital – Omaha, NE</li> <li>• Midlands Hospital - Papillion, NE</li> <li>• Nebraska Spine Hospital - Omaha, NE</li> <li>• The Nebraska Medical Center - Omaha, NE</li> <li>• Community Memorial Hospital - Missouri Valley, IA</li> <li>• Mercy Hospital - Corning, IA</li> <li>• Mercy Hospital - Council Bluffs, IA</li> </ul> <p>*14 Critical Access Hospitals, 2 regional hospitals and 1 research hospital have signed participation agreements in Q3</p>	<ul style="list-style-type: none"> <li>• Bellevue Medical Center - Bellevue NE</li> <li>• Bergan Mercy Hospital - Omaha, NE</li> <li>• Children's Hospital and Medical Center - Omaha, NE</li> <li>• Creighton University and Medical Center, Omaha, NE</li> <li>• Great Plains Regional Medical Center – North Platte, NE</li> <li>• Lakeside Hospital - Omaha, NE</li> <li>• Immanuel Hospital - Omaha, NE</li> <li>• Mary Lanning Memorial Hospital - Hastings, NE</li> <li>• Memorial Hospital - Schuyler, NE</li> <li>• Methodist Hospital - Omaha, NE</li> <li>• Methodist Women's Hospital – Omaha, NE</li> <li>• Midlands Hospital -Papillion, NE</li> <li>• Nebraska Spine Hospital - Omaha, NE</li> <li>• The Nebraska Medical Center - Omaha, NE</li> <li>• Community Memorial Hospital - Missouri Valley, IA</li> <li>• Mercy Hospital - Corning, IA</li> <li>• Mercy Hospital - Council Bluffs, IA</li> </ul> <p>*14 Critical Access Hospitals, 2 regional hospitals and 1 research hospital have signed participation agreements in Q3</p>

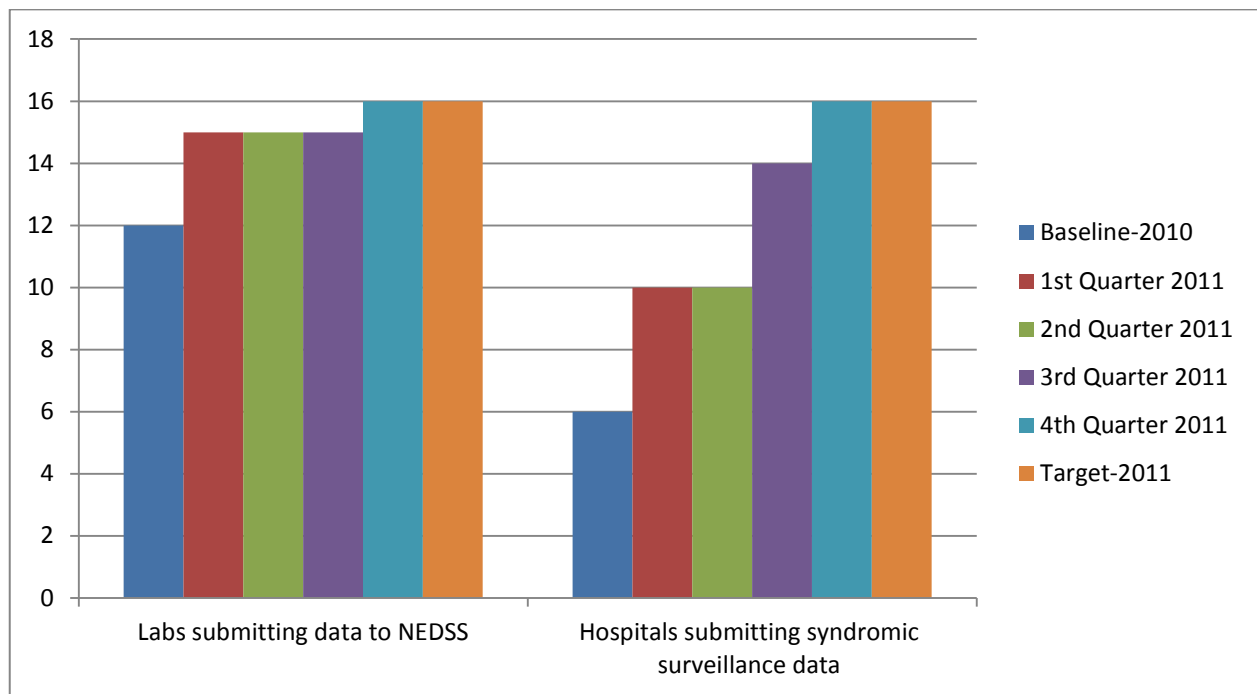


Baseline— 2010	1 <sup>st</sup> Quarter	2 <sup>nd</sup> Quarter	3 <sup>rd</sup> Quarter	4 <sup>th</sup> Quarter	Target—End of 2011
238	284	284	290*	450**	An increase of 20% to 286

\*Note: 31 providers were sending immunization data electronically at the end of the third quarter.

\*\*Note: 450 providers were sending immunization data electronically at the end of the fourth quarter.





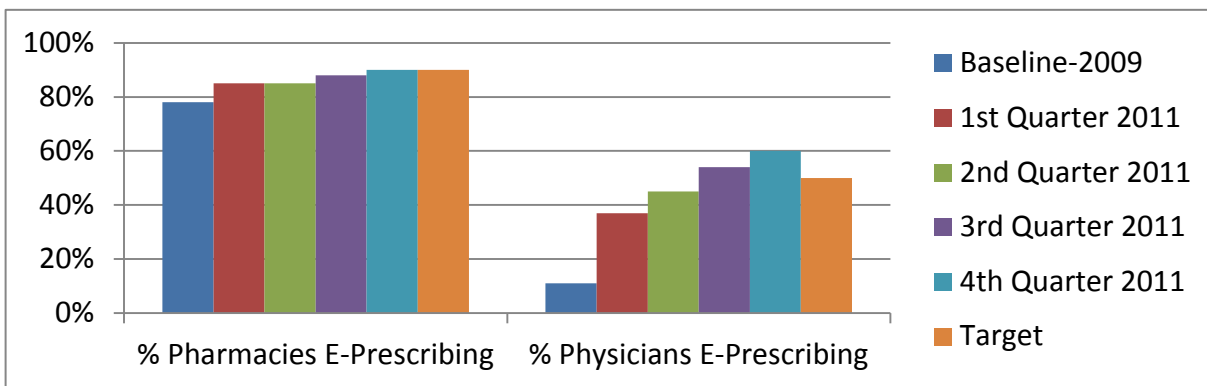
Public Health Reporting	Baseline—2010	1 <sup>st</sup> Quarter	2 <sup>nd</sup> Quarter	3 <sup>rd</sup> Quarter	4 <sup>th</sup> Quarter	Target—End of 2011
# of labs submitting data to NEDSS	12	15	15	15	16	An increase of 30% to 16
# of hospitals submitting data to the syndromic surveillance system	6	10	10	14	16	16

## Labs and Hospitals Participating in Public Health Reporting

	1 <sup>st</sup> Quarter	2 <sup>nd</sup> Quarter	3 <sup>rd</sup> Quarter	4 <sup>th</sup> Quarter
<b>Labs submitting to NEDSS</b>	UNMC - Omaha Bryan LGH - Lincoln Columbus Community Hospital Faith Regional Medical Center - Norfolk Great Plains Regional-North Platte Regional West-Scottsbluff Children's Hospital-Omaha ARUP-serves multiple cities in NE Cerner-serves multiple cities in NE Kearney Good Samaritan-Kearney Creighton Medical-Omaha PLab-Lincoln Quest-serves multiple cities in NE Catholic Health-Grand Island Alegent-Lincoln	UNMC - Omaha Bryan LGH - Lincoln Columbus Community Hospital Faith Regional Medical Center - Norfolk Great Plains Regional-North Platte Regional West-Scottsbluff Children's Hospital-Omaha ARUP-serves multiple cities in NE Cerner-serves multiple cities in NE Kearney Good Samaritan-Kearney Creighton Medical-Omaha PLab-Lincoln Quest-serves multiple cities in NE Catholic Health-Grand Island Alegent-Lincoln	UNMC - Omaha Bryan LGH - Lincoln Columbus Community Hospital Faith Regional Medical Center - Norfolk Great Plains Regional-North Platte Regional West-Scottsbluff Children's Hospital-Omaha ARUP-serves multiple cities in NE Cerner-serves multiple cities in NE Kearney Good Samaritan-Kearney Creighton Medical-Omaha PLab-Lincoln Quest-serves multiple cities in NE Catholic Health-Grand Island Alegent-Lincoln	UNMC - Omaha Bryan LGH - Lincoln Columbus Community Hospital Faith Regional Medical Center - Norfolk Great Plains Regional-North Platte Regional West-Scottsbluff Children's Hospital-Omaha ARUP-serves multiple cities in NE Cerner-serves multiple cities in NE Kearney Good Samaritan-Kearney Creighton Medical-Omaha PLab-Lincoln Quest-serves multiple cities in NE Catholic Health-Grand Island Alegent-Lincoln Fremont Area Medical Center
<b>Hospitals submitting syndromic surveillance data</b>	York General Hospital Children's Hospital-Omaha Great Plains Reg Med Center-North Platte Fremont Area Medical Center Beatrice Comm. Hospital The NE Medical Center-Omaha Nebraska Methodist Hosp – Omaha Mary Lanning Hospital-Hastings Falls City Comm. Medical Center Box Butte General Hospital	York General Hospital Children's Hospital-Omaha Great Plains Reg Med Center-North Platte Fremont Area Medical Center Beatrice Comm. Hospital The NE Medical Center-Omaha Nebraska Methodist Hosp – Omaha Mary Lanning Hospital-Hastings Falls City Comm. Medical Center Box Butte General Hospital	Children's Hospital-Omaha Great Plains Reg Med Center-North Platte Fremont Area Medical Center Beatrice Comm. Hospital The NE Medical Center-Omaha Nebraska Methodist Hosp – Omaha Mary Lanning Hospital-Hastings Falls City Comm. Medical Center Box Butte General Hospital McCook Community Hospital Providence Medical Center (Wayne)	Children's Hospital-Omaha Great Plains Reg Med Center-North Platte Fremont Area Medical Center Beatrice Comm. Hospital The NE Medical Center-Omaha Nebraska Methodist Hosp – Omaha Mary Lanning Hospital-Hastings Falls City Comm. Medical Center Box Butte General Hospital McCook Community Hospital Providence Medical Center (Wayne) Crete Area Medical Center Box Butte Primary Care

Transaction Type	July –Dec 2011
Immunizations into NESIIS	232,458
Lab Results into NEDSS	65,501
Cardiovascular Disease Syndromic Syndromic Surveillance transactions	14,007
ED Syndromic Surveillance transactions	164,827
<b>Total</b>	<b>476,793</b>

### E-Prescribing Adoption



Baseline-- End of 2009	1 <sup>st</sup> Quarter	2 <sup>nd</sup> Quarter	3 <sup>rd</sup> Quarter	4 <sup>th</sup> Quarter	Target—End of 2011
78% of community pharmacies activated for e-prescribing	85% of pharmacies are activated for e-prescribing (March 2011)  <b>Note:</b> Two pharmacies joined NeHII	85% of pharmacies are activated for e-prescribing (May 2011) <b>Note:</b> Four more pharmacies joined NeHII, bring the total to six	88% of pharmacies are activated for e-prescribing (August 2011)	90% of community pharmacies are activated for e-prescribing (November 2011)	90% of community pharmacies activated for e-prescribing
11% of physicians in Nebraska routed prescriptions electronically	37% (1197 out of 3202) of physicians in Nebraska are routing prescriptions electronically (March 2011)	45% (1436 out of 3202) of physicians in Nebraska are routing prescriptions electronically (May 2011)	54% (2342 out of 3202) of physicians in Nebraska are routing prescriptions electronically (August 2011)	60% of physicians in Nebraska are routing prescriptions electronically (November 2011)	50% of physicians in Nebraska routing prescriptions electronically

Anne Byers  
eHealth and Community Information Technology Manager  
Nebraska Information Technology Commission  
(402) 471-3805  
anne.byers@nebraska.gov

Donald Klepser, Ph.D., MBA  
Health Information Exchange Evaluation Team  
University of Nebraska Medical Center  
(402) 559-4927  
dklepser@unmc.edu

[www.nitc.nebraska.gov](http://www.nitc.nebraska.gov)

