

Distance Learning (LB 1208) Network Nebraska - CAP Update

Project Leads

Tom Rolfes

Education I.T. Manager
Office of the CIO and NITC
501 S. 14th Street, P.O. Box 95045
Lincoln, NE 68509-5045
tom.rolfes@nebraska.gov
402-471-7969 (voice)

Rick Golden

Asst. CIO/Director of Network & Systems
U of Nebraska Computing Services Network
Varner Hall 231, 3835 Holdrege Street
Lincoln, NE 68583-0742
rgolden@nebraska.edu
402-472-7626 (voice)

Executive Sponsors of Network Nebraska:

<http://www.networknebraska.net/> (Network Nebraska website)

Brenda Decker, Chief Information Officer, State of Nebraska
Chair of the Collaborative Aggregation Partnership (CAP—OCIO, NET, UNCSN, PSC, NDE,
NITC)

brenda.decker@nebraska.gov
402-471-3717

Walter Weir, Chief Information Officer, University of Nebraska
Chair of the NITC Technical Panel

wweir@nebraska.edu
402-472-2862

Co-Chairs of the Network Nebraska-Education Advisory Group (NNAG):

<http://nitc.nebraska.gov/NNAG/index.html> (NNAG Website)

John Stritt, Distance Learning Director
Educational Service Unit 10
jstritt@esu10.org
308-865-5664 x281

Debbie Schroeder, Asst Vice-Chancellor
UN-K Information Technology Services
schroederd@unk.edu
308-865-8950

Other Key Staff:

SuAnn Witt, E-rate and Infrastructure Specialist, Nebraska Department of Education
suann.witt@nebraska.gov
402-471-2085

<http://www.education.ne.gov/Neat/DistanceEducation.html> (lottery fund incentive program)

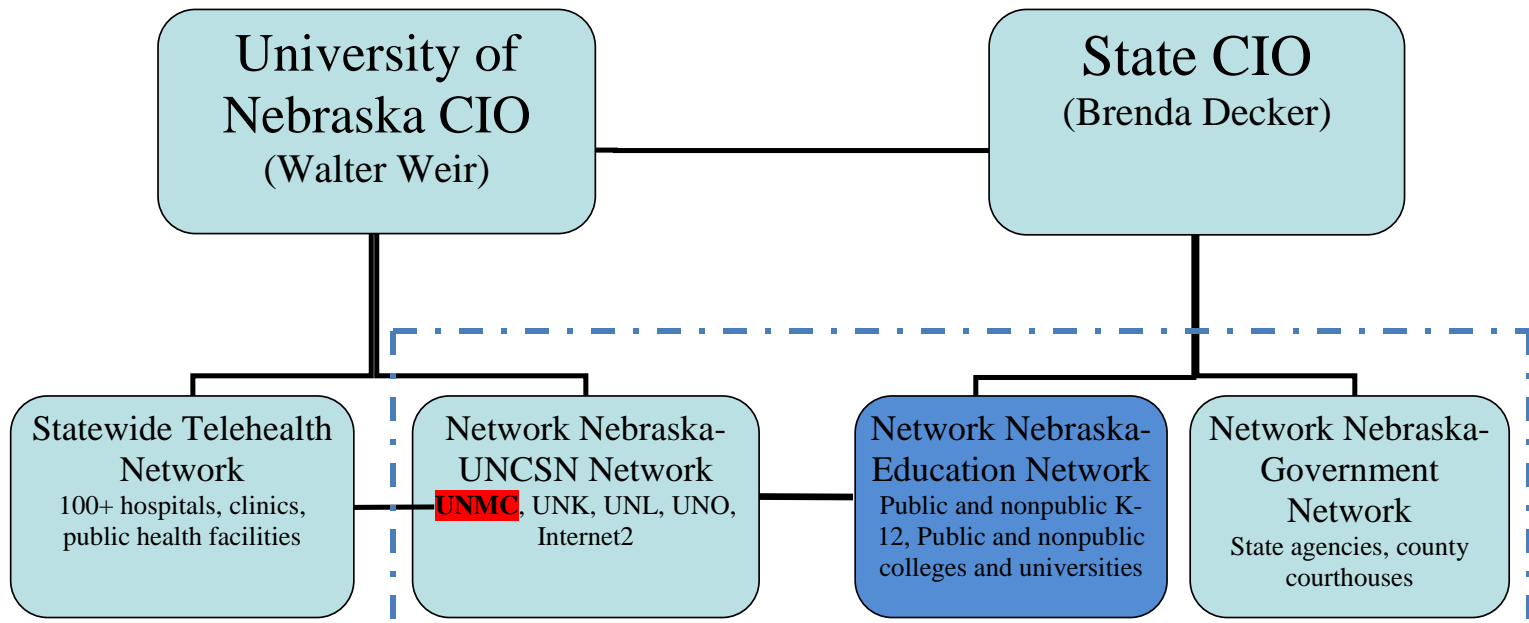
Gordon Roethemeyer, Distance Learning Coordinator, ESU Coordinating Council
groethem@esucc.org

308-865-5664 x294

<http://nvis.esucc.org/> (clearinghouse of distance education courses and virtual field trips)



- (N.R.S. 86-5,100) The Chief Information Officer, in partnership with the University of Nebraska, shall develop and maintain a statewide, multipurpose, high capacity, scalable telecommunications network to be called **Network Nebraska**. The network shall consist of contractual arrangements with providers to meet the demand of state agencies, local governments, and educational entities as defined in section 79-1201.01. *(LB 1208—2006 Session)* (“Network Nebraska” is shown inside the dotted lines)



Network Nebraska—Education Participant Report (Part 1- PUBLIC Entities) July 1, 2013 (proj.)

Neb. Rev. Stat. 86-5,100 (excerpt) Network Nebraska; development and maintenance; access; Chief Information Officer; duties; cost; report.

The Chief Information Officer shall provide access to each school district, each educational service unit, each community college, each state college, and the University of Nebraska at the earliest feasible date and no later than July 1, 2012. Access may be provided through educational service units or other aggregation points. Participation in Network Nebraska shall not be required for any educational entity.*

*Note “Access” was defined by the Chief Information Officer as the ability to connect via Ethernet to one of the Network Nebraska—Education core aggregation points.

SUMMARY: Network Nebraska—Education PUBLIC K-20 Participants, as of 7/1/2013:

224 of 252* public school districts (*unified districts as separate entities)	(89%)
15 of 17 Educational Service Units	(88%)
8 of 8 community colleges (including 2 tribal colleges)	(100%)
3 of 3 state colleges	(100%)
1 of 1 University of Nebraska	(100%)

Network Nebraska—Education Participant Report (Part 2- NON-PUBLIC Entities) July 1, 2013

Neb. Rev. Stat. 86-5,100 (excerpt) Network Nebraska; development and maintenance; access; Chief Information Officer; duties; cost; report.

*The network shall consist of contractual arrangements with providers to meet the demand of state agencies, local governments, **and educational entities** as defined in section [79-1201.01](#).*

Neb. Rev.Stat. 79-1201.01 (excerpt) Terms, defined.

*3) **Educational entity** means a school district, a private, denominational, or parochial school, an educational service unit, a community college, a state college, the University of Nebraska, or a nonprofit private postsecondary educational institution;*

SUMMARY: Network Nebraska—Education NON-PUBLIC K-20 Participants, as of 7/1/2013:

4 of 213 private, denominational or parochial schools	(2%)
7 of 14 nonprofit private postsecondary educational institutions	(50%)

Appendices available upon request from the Office of the CIO, 402-471-7969, tom.rolfes@nebraska.gov :

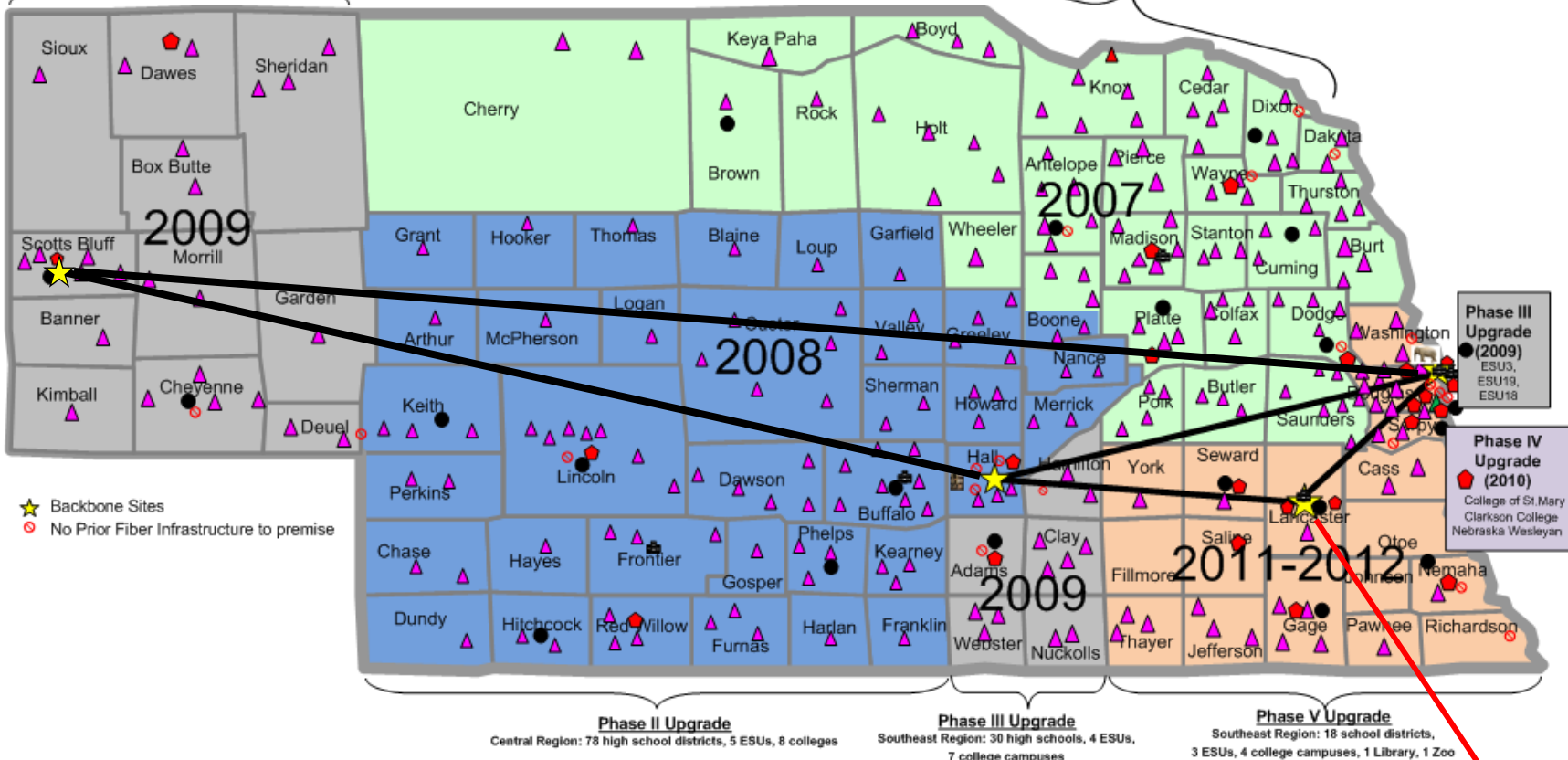
Appendix A—PUBLIC K-12 Entity Participant List (districts and ESUs)
 Appendix B—PUBLIC Higher Education Entity Participant List
 Appendix C—PUBLIC K-12 Non-Participant List (districts and ESUs)
 Appendix D—PUBLIC Higher Education Non-Participant list

Appendix E—NON-PUBLIC K-12 Participant List
 Appendix F—NON-PUBLIC Higher Education Participant List
 Appendix G—NON-PUBLIC K-12 Non-Participant list
 Appendix H—NON-PUBLIC Higher Education Non-Participant list

Network Nebraska-Education Map by Year

Phase III Upgrade
Panhandle Region: 23 high school districts,
2 ESU offices, 1 college campus

Phase I Upgrade
Green Shading of Northeast Region:
87 high school districts, 5 ESUs, &
2 college campuses



★ Backbone Sites
○ No Prior Fiber Infrastructure to premise

Phase I – Green Shading on Counties
North Central/NorthEast Regions 2007

- ▲ 87 School Districts
- 5 ESU Offices (1, 2, 7, 8, & 17)
- ◆ 2 College campuses
- NU (UNO, UNL, UNMC, UNK)

Phase II – Blue Shading on Counties
South Central Regions 2008

- ▲ 78 School districts
- 4 ESU Offices (10, 11, 15, & 16)
- ◆ 7 College campuses
- 1 NU (NCTA)

Phase III – Gray Shading on Counties
Western/SouthEast Regions in 2009

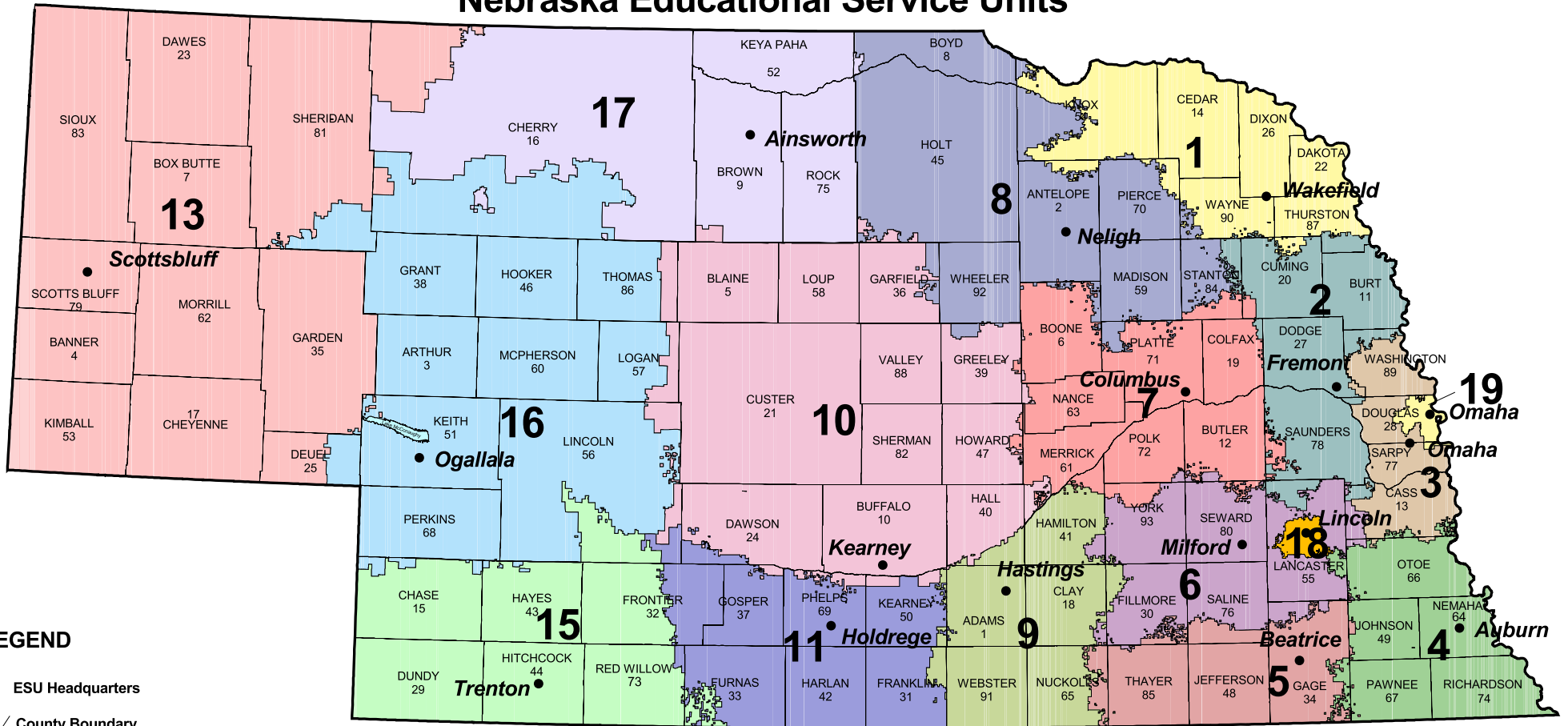
- ▲ 42 School districts
- 6 ESU Offices (3, 9, 13, 14, 18, & 19)
- ◆ 8 College campuses

Salmon Shading on Southeast Region (2011-2012)

- ▲ 18 School districts
- 3 ESU Offices (4, 5, & 6)
- ◆ 4 College campuses
- Henry Doorly Zoo
- Grand Island Public Library

Internet2
(K.C. GigaPop)

Nebraska Educational Service Units



LEGEND

● ESU Headquarters

∧ County Boundary

Educational Service Units and Headquarters

- ESU 1, Wakefield
- ESU 2, Fremont
- ESU 3, Omaha
- ESU 4, Auburn
- ESU 5, Beatrice
- ESU 6, Milford
- ESU 7, Columbus
- ESU 8, Neligh
- ESU 9, Hastings
- ESU 10, Kearney
- ESU 11, Holdrege
- ESU 13, Scottsbluff
- ESU 15, Trenton
- ESU 16, Ogallala
- ESU 17, Ainsworth
- ESU 18, Lincoln
- ESU 19, Omaha

COUNTY	NUMBER	COUNTY	NUMBER	COUNTY	NUMBER	COUNTY	NUMBER	COUNTY	NUMBER
Adams	1	Custer	21	Hamilton	41	Merrick	61	Sheridan	81
Antelope	2	Dakota	22	Harlan	42	Morrill	62	Sherman	82
Arthur	3	Dawes	23	Hayes	43	Nance	63	Sioux	83
Banner	4	Dawson	24	Hitchcock	44	Nemaha	64	Stanton	84
Blaine	5	Deuel	25	Holt	45	Nuckolls	65	Thayer	85
Boone	6	Dixon	26	Hooker	46	Otoe	66	Thomas	86
Box Butte	7	Dodge	27	Howard	47	Pawnee	67	Thurston	87
Boyd	8	Douglas	28	Jefferson	48	Perkins	68	Valley	88
Brown	9	Dundy	29	Johnson	49	Phelps	69	Washington	89
Buffalo	10	Fillmore	30	Kearney	50	Pierce	70	Wayne	90
Burt	11	Franklin	31	Keith	51	Platte	71	Webster	91
Butler	12	Frontier	32	Keya Paha	52	Polk	72	Wheeler	92
Cass	13	Furnas	33	Kimball	53	Red Willow	73	York	93
Cedar	14	Gage	34	Knox	54	Richardson	74		
Chase	15	Garden	35	Lincoln	55	Rock	75		
Cherry	16	Garfield	36	Lancaster	56	Saline	76		
Cheyenne	17	Gosper	37	Logan	57	Sarpy	77		
Clay	18	Grant	38	Loup	58	Saunders	78		
Colfax	19	Greeley	39	Madison	59	Scotts Bluff	79		
Cuming	20	Hall	40	McPherson	60	Seward	80		



Nebraska Department of Education

Information Source:
 ESU Boundaries - School Districts - County Clerks
 Counties, Towns - TIGER Line Files 1995
 Prepared by: Michelle Stephens
 Nebraska Department of Education
 Education Support Services
 Phone: (402) 471-2487
 E-mail: michelle.stephens@nde.ne.gov
 GIS Process, ArcView 3.2, ESRI,
 August 2007

Network Nebraska Backbone Funding (2012-13)

Total Cost/Month = \$ 15,259.15

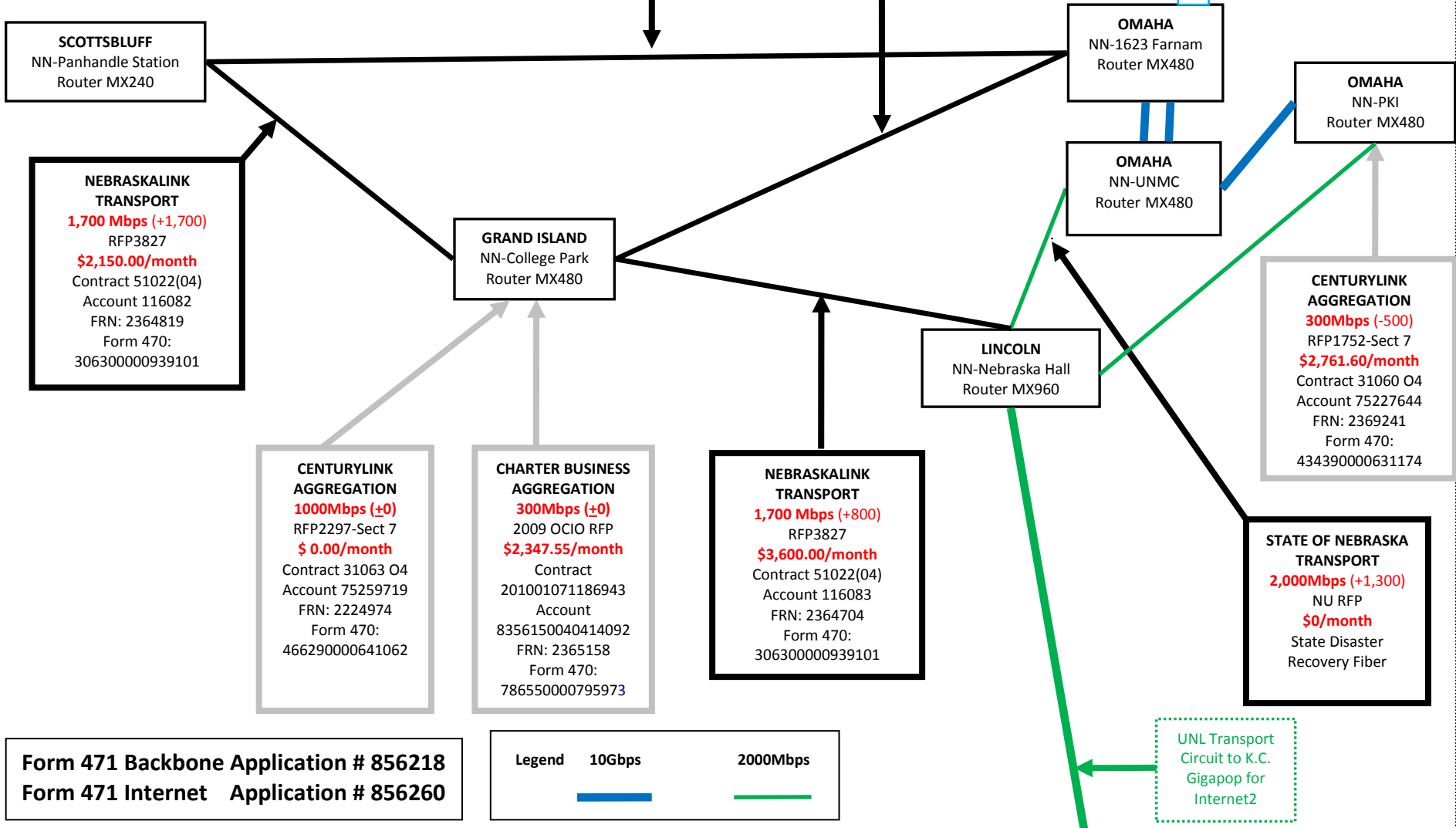
Total Cost/Year = \$183,109.80

Annual K-12 Eligible Cost (proj.)	\$ 171,200.22
Form 471 E-rate Filing (proj.)	-- \$ 118,128.15
Total Annual non-discount share	\$ 53,072.07

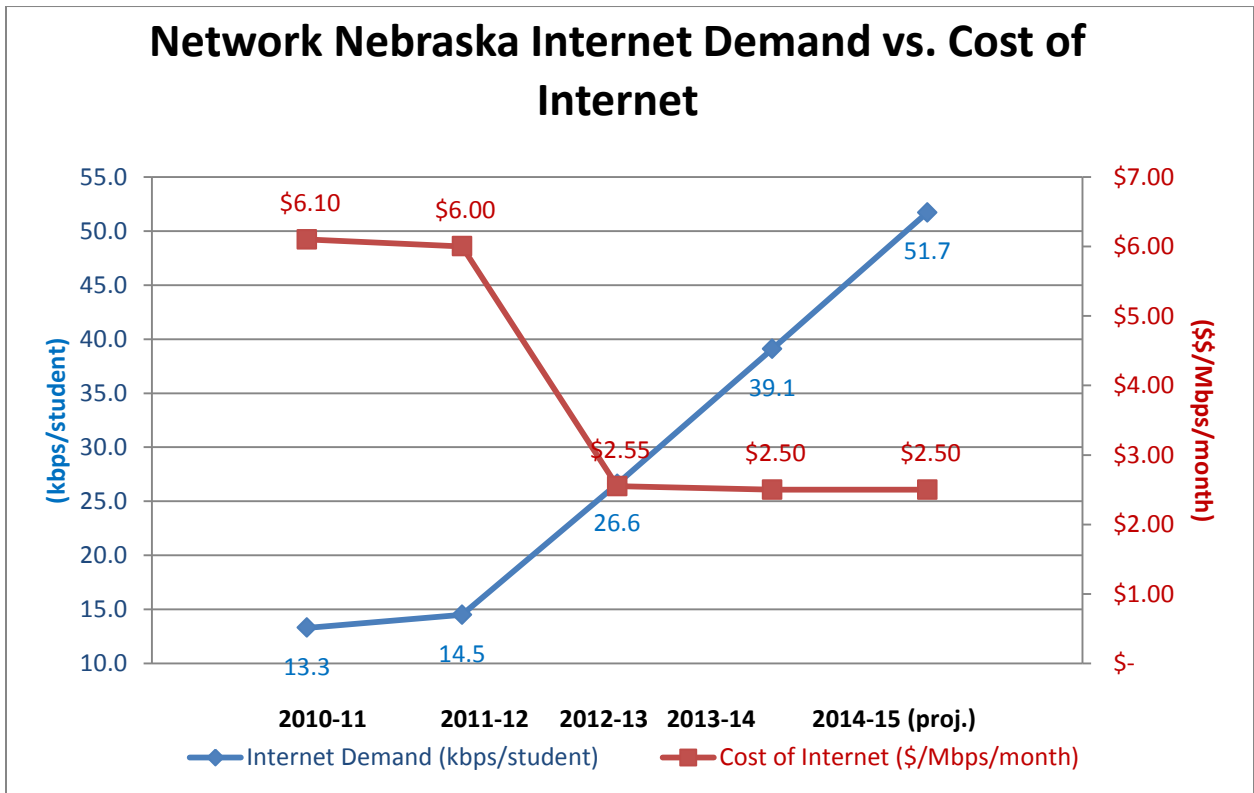
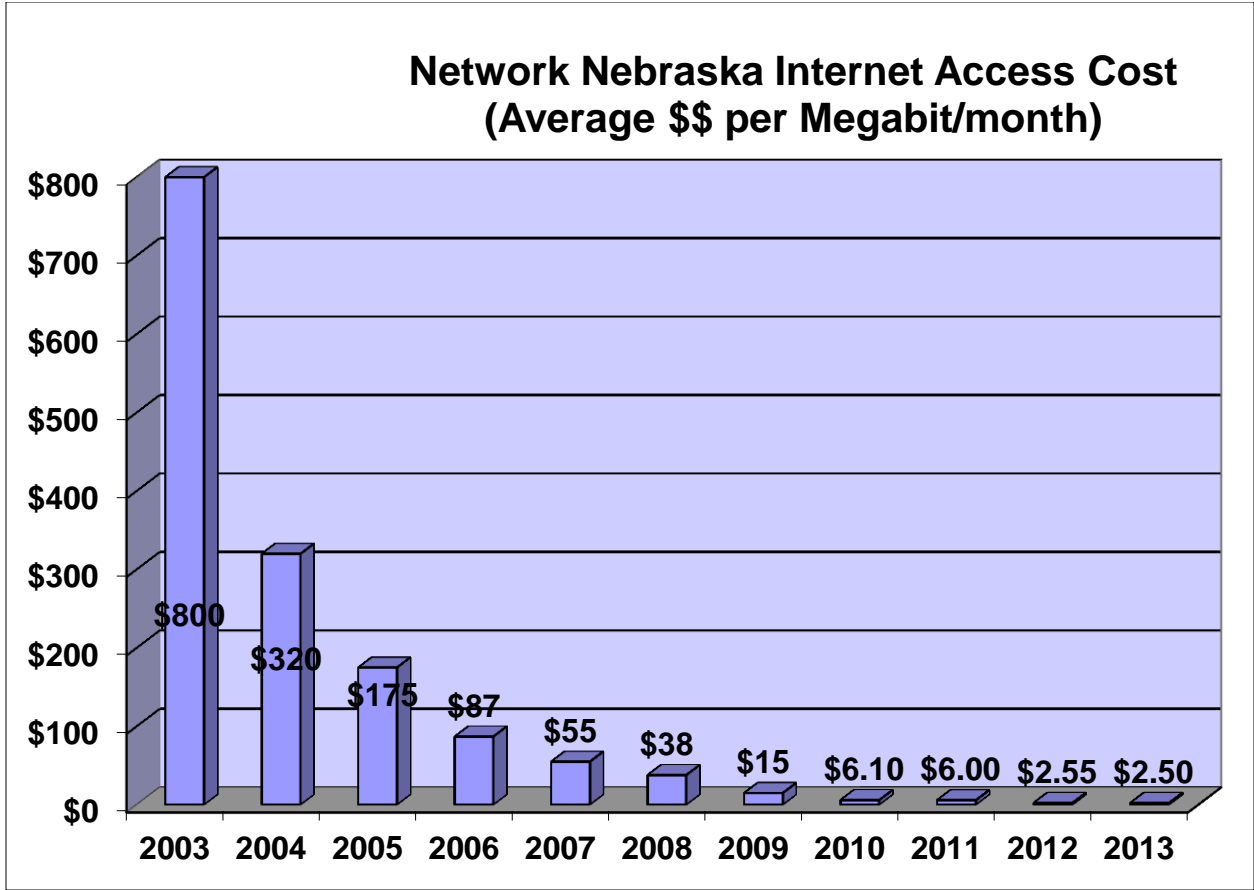
NEBRASKALINK TRANSPORT
1,700 Mbps (+1,700)
 RFP3886
\$2,200.00/month
 Contract 51441(04)
 Account 116084
 FRN: 2365245
 Form 470:
 760920000998090

NEBRASKALINK TRANSPORT
1,700Mbps (+1,500)
 RFP3827
\$2,200.00/month
 Contract 51022(04)
 Account 116081
 FRN: 2364933
 Form 470:
 306300000939101

UNITE PRIVATE NETWORKS INTERNET
4,900Mbps (+2658)
 RFP 3827
\$12,495.00/month
 Contract 51026(04)
 Account 2400
 FRN: 2364549
 Form 470:
 617200000938999



Form 471 Backbone Application # 856218
Form 471 Internet Application # 856260



Network Nebraska-Education

APPENDIX 1: Cost Structure (annually reviewed and updated)

<u>Performance Year</u>	<u>Network Nebraska Participation Fee</u>	<u>Number of Entities</u>
2007-08	\$200.00/month/entity	94 entities
2008-09	\$197.80/month/entity	182 entities
2009-10	\$192.47/month/entity	232 entities
2010-11	\$195.13/month/entity	228 entities
2011-12	\$190.21/month/entity	244 entities
2012-13	\$203.48/month/entity	252 entities
2013-14	<i>To be announced</i>	<i>258 entities</i>

<u>Performance Year</u>	<u>Network Nebraska Interregional Transport Fee</u>	<u>Number of Entities</u>
2007-08	\$ 0.00/month/entity (no backbone until 2008-09)	94 entities
2008-09	\$ 93.35/month/entity (\$34.21/month/E-rate entity)	182 entities
2009-10	\$ 92.72/month/entity (\$34.48/month/E-rate entity)	232 entities
2010-11	\$115.78/month/entity (\$36.45/month/E-rate entity)	228 entities
2011-12	\$101.09/month/entity (\$31.69/month/E-rate entity)	244 entities
2012-13	\$ 61.28/month/entity (\$18.67/month/E-rate entity)	252 entities
2013-14	\$ 54.21/month/entity (\$16.81/month/E-rate entity)	258 entities

<u>Performance Year</u>	<u>Network Nebraska Commodity Internet Cost</u>	<u>Amount Purchased</u>
2007-08	\$38.00/Mbps/month (\$11.78/Mbps/Month for E-rate entity)	N/A
2008-09	\$25.00/Mbps/month (\$7.750/Mbps/Month for E-rate entity)	0.3Gbps
2009-10	\$15.00/Mbps/month (\$4.650/Mbps/Month for E-rate entity)	1.1Gbps
2010-11	\$ 6.10/Mbps/month (\$1.860/Mbps/Month for E-rate entity)	1.9Gbps
2011-12	\$ 6.00/Mbps/month (\$1.860/Mbps/Month for E-rate entity)	2.2Gbps
2012-13	\$ 2.55/Mbps/month (\$.7905/Mbps/Month for E-rate entity)	4.3Gbps
2013-14	\$ 2.50/Mbps/month (\$.7775/Mbps/Month for E-rate entity)	8.0Gbps

Procurement and E-rate Procedures related to Network Nebraska-Education (K-12)

Type of Service	Description of Service	RFP performed by:	E-rate filing by:	Provider invoice sent to:	Providers involved:
"last mile"	Circuits that interconnect school buildings and the district aggregation point (e.g. 1.5Mbps, 10Mbps)	Local school district or ESU	Local school district and/or assisted by the ESU	Local school district	Local provider, wireless company, or school district fiber
"middle mile"	High bandwidth, wide area network, fiber and copper circuits connecting the school district aggregation point to the Network Nebraska aggregation point (e.g. 40Mbps, 100Mbps)	State Purchasing or ESU or local school district	Local school district and/or assisted by the ESU	Local school district or consortium (in the case of ESU 13 or ESUs 15/16)	All Nebraska telecommunications companies
Statewide backbone	High bandwidth transport or aggregation circuits interconnecting the 5 Network Nebraska aggregation points at Omaha, Lincoln, Grand Island, Scottsbluff (e.g. 400Mbps, 2,000Mbps)	State Purchasing	State Office of the CIO; average statewide E-rate discount 69%	State Office of the CIO; average statewide E-rate discount 69%	NebraskaLink for 2012-2016, Charter for 2011-2014, CenturyLink for 2007-2012
Statewide Internet	Aggregated demand from all K-12 entities rolled into a single, statewide purchase (e.g. 8 Gbps, 10 Gbps)	State Purchasing	State Office of the CIO; average statewide E-rate discount 69%	State Office of the CIO; average statewide E-rate discount 69%	Unite Private Networks for 2012-2015, Windstream for 2010-2012, CenturyLink for 2007-2010

Compiled by Tom Rolfes, Nebraska Information Technology Commission, tom.rolfes@nebraska.gov, 402-471-7969

Appendix A—Part 1 PUBLIC K-12 Entity Participant List, as of 7/1/2013:

#	Entity	ESU
001	Allen Consolidated School	1
002	Bloomfield Community School	1
003	Coleridge Community School	1
004	Creighton Community School	1
005	Crofton Community School	1
006	Emerson-Hubbard Community School	1
007	Hartington Public School	1
008	Homer Community School	1
009	Laurel-Concord Public School	1
010	Nebraska Unified Dist. #1—Verdigre	1
011	Newcastle Public School	1
012	Niobrara Public School	1
013	Pender Public School	1
014	Ponca Public School	1
015	Randolph Public School	1
016	Santee Community School	1
017	South Sioux City Community Schools	1
018	Umo Ho Nation Public School	1
019	Wakefield Community School	1
020	Walthill Public School	1
021	Wausa Public School	1
022	Wayne Public Schools	1
023	Winnebago Public School	1
024	Winside Public School	1
025	Wynot Public School	1
026	Ashland-Greenwood Public Schools	2
027	Bancroft-Rosalie Public Schools	2
028	Cedar Bluffs Public Schools	2
029	Fremont Public Schools	2
030	Logan View Public Schools	2
031	Lyons-Decatur NE Public School	2
032	Mead Public School	2
033	North Bend Central Public School	2
034	Oakland-Craig Public School	2
035	Raymond Central Public School	2
036	Scribner-Snyder Public School	2
037	Tekamah-Herman Public School	2
038	Wahoo Public Schools	2
039	West Point-Beemer Public School	2
040	Wisner-Pilger Public Schools	2
041	Yutan Public Schools	2
042	Douglas County West Community School	3
043	Louisville Public Schools	3
044	Springfield Platteview Community Schools	3
045	Weeping Water Public Schools	3
046	District OR 1-Palmyra/Bennet	4

047	Falls City Public Schools	4
048	Johnson Brock Public Schools	4
049	Johnson County Central Schools	4
050	Lewiston Consolidated Schools	4
051	Nebraska City Public Schools	4
052	Pawnee City Public Schools	4
053	Sterling Public Schools	4
054	Beatrice Public Schools	5
055	Bruning-Davenport Unified System	5
056	Deshler Public Schools	5
057	Diller-Odell Public Schools	5
058	Fairbury Public Schools	5
059	Freeman Public Schools	5
060	Meridian Public Schools	5
061	Southern School District 1	5
062	Thayer Central Community Schools	5
063	Tri County Public Schools	5
064	Centennial Public Schools	6
065	Dorchester Public Schools	6
066	Heartland Community Schools	6
067	Milford Public Schools	6
068	Norris School District 160	6
069	Waverly School District 145	6
070	Boone Central Schools	7
071	Cedar Rapids Public Schools	7
072	Central City Public Schools	7
073	Clarkson Public Schools	7
074	Columbus Public Schools	7
075	Cross County Public School	7
076	David City Public School	7
077	East Butler Public School	7
078	Fullerton Public Schools	7
079	High Plains Community School	7
080	Howells-Dodge Consolidated Schools	7
081	Humphrey Public Schools	7
082	Lakeview Community Schools	7
083	Leigh Community School	7
084	Osceola Public Schools	7
085	Palmer Public Schools	7
086	Schuyler Community Schools	7
087	Shelby-Rising City Public Schools	7
088	St. Edward Public Schools	7
089	Twin River Public Schools	7
090	Battle Creek Public School	8
091	Chambers Public School	8
092	Elgin Public School	8
093	Elkhorn Valley Public School	8
094	Ewing Public School	8
095	Lynch Public School	8
096	Madison Public School	8

097	Nebraska Unified Dist. #1—Clearwater	8
098	Nebraska Unified Dist. #1—Orchard	8
099	Neligh-Oakdale Public School	8
100	Newman Grove Public School	8
101	Norfolk Public Schools	8
102	O'Neill Public School	8
103	Osmond Community School	8
104	Pierce Public School	8
105	Plainview Public School	8
106	Stanton Community School	8
107	Stuart Public School	8
108	West Boyd Public Schools-Spencer	8
109	West Holt Public School	8
110	Wheeler Central Public School	8
111	Adams Central Public Schools	9
112	Aurora Public Schools	9
113	Blue Hill Public Schools	9
114	Doniphan-Trumbull Public Schools	9
115	Giltner Public Schools	9
116	Hampton Public Schools	9
117	Harvard Public Schools	9
118	Hastings Public Schools	9
119	Kenesaw Public Schools	9
120	Red Cloud Community Schools	9
121	Silver Lake Public Schools	9
122	So Central Unified: Lawrence/Nelson Sec School	9
123	So Central Unified: Sandy Creek High School	9
124	Superior Public Schools	9
125	Sutton Public Schools	9
126	Amherst Public Schools	10
127	Anselmo-Merna Public Schools	10
128	Ansley Public Schools	10
129	Arcadia Public Schools	10
130	Arnold Public Schools	10
131	Broken Bow Public Schools	10
132	Burwell Jr-Sr Public Schools	10
133	Callaway Public Schools	10
134	Centura Secondary School	10
135	Cozad Public Schools	10
136	Elba Secondary School	10
137	Elm Creek Public Schools	10
138	Gibbon Public Schools	10
139	Gothenburg Secondary School	10
140	Grand Island Public Schools	10
141	Greeley-Wolbach Sr High School	10
142	Kearney Public Schools	10
143	Lexington Public Schools	10
144	Litchfield Public Schools	10
145	Loup City Public Schools	10
146	Loup County Public Schools	10

147	North Loup-Scotia Public Schools	10
148	Northwest High School (Grand Island)	10
149	Ord Jr-Sr Public Schools	10
150	Overton Public Schools	10
151	Pleasanton Public Schools	10
152	Ravenna Public Schools	10
153	Sandhills Public Schools (Dunning HS)	10
154	Sargent Public Schools	10
155	Shelton Public Schools	10
156	Spalding Secondary School	10
157	St Paul Public Schools	10
158	Sumner/Eddyville/Miller Public Schools	10
159	Wood River Rural Public Schools	10
160	Alma Public Schools	11
161	Arapahoe Public Schools	11
162	Axtell Public Schools	11
163	Bertrand Public Schools	11
164	Cambridge Public Schools	11
165	Elwood Public Schools	11
166	Franklin Secondary School	11
167	Holdrege Public Schools	11
168	Loomis Secondary School	11
169	Minden Public Schools	11
170	Southern Valley Jr/Sr High	11
171	Wilcox-Hildreth Public Schools	11
172	Alliance Public Schools	13
173	Banner County Public Schools	13
174	Bayard Public Schools	13
175	Bridgeport Public Schools	13
176	Chadron Public Schools	13
177	Crawford Public Schools	13
178	Creek Valley High School (Chappell)	13
179	Garden County Schools	13
180	Gering Public Schools	13
181	Gordon-Rushville High School (Gordon)	13
182	Hay Springs Public Schools	13
183	Hemingford Public Schools	13
184	Kimball Public Schools	13
185	Leyton Public Schools	13
186	Minatare Public Schools	13
187	Mitchell Public Schools	13
188	Morrill Public Schools	13
189	Potter-Dix Public Schools	13
190	Scottsbluff Public Schools	13
191	Sidney Public Schools	13
192	Sioux County Public Schools	13
193	Chase County Public Schools	15
194	Dundy County Public Schools	15
195	Eustis-Farnam Public Schools	15
196	Hayes Center Secondary School	15

197	Hitchcock County Jr/Sr High	15
198	Maywood Public Schools	15
199	McCook Senior Public Schools	15
200	Medicine Valley Jr-Sr High School	15
201	Southwest High School-Indianola	15
202	Wauneta-Palisade Public Schools	15
203	Arthur County Public Schools	16
204	Brady Public Schools	16
205	Hershey Public Schools	16
206	Hyannis Area Schools [District 11 Area Schools]	16
207	Maxwell Public Schools	16
208	McPherson County Public Schools	16
209	Mullen Public Schools	16
210	North Platte Public Schools	16
211	Ogallala Public Schools	16
212	Paxton Public Schools	16
213	Perkins County High School	16
214	Stapleton Public Schools	16
215	Sutherland Public Schools	16
216	Theford Public Schools	16
217	Wallace Public Schools	16
218	Ainsworth Community Schools	17
219	Cody-Kilgore Unified Schools	17
220	Keya Paha County Schools	17
221	Rock County Public School	17
222	Valentine Community Schools	17
223	Lincoln Public Schools	18
224	Omaha Public Schools	19

<u>#</u>	<u>Entity</u>	<u>Location</u>
001	ESU 01	Wakefield
002	ESU 02	Fremont
003	ESU 03	La Vista
004	ESU 05	Beatrice
005	ESU 07	Columbus
006	ESU 08	Neligh
007	ESU 09	Hastings
008	ESU 10	Kearney
009	ESU 11	Holdrege
010	ESU 13	Scottsbluff
011	ESU 15	Trenton
012	ESU 16	Ogallala
013	ESU 17	Ainsworth
014	ESU 18	Lincoln
015	ESU 19	Omaha

Appendix B—Part 1 PUBLIC Higher Education Entity Participant List, as of 7/1/2013:

<u>#</u>	<u>Entity</u>	<u>Location</u>
Community Colleges		
001	Central Community College	Grand Island
002	Mid-Plains Community College	North Platte
003	Little Priest Tribal College	Winnebago
004	Metro Community College	Omaha
005	Nebraska Indian Community College	Macy
006	Northeast Community College	Norfolk
007	Southeast Community College	Lincoln
008	Western Community College	Scottsbluff
State Colleges		
001	Chadron State College	Chadron
002	Peru State College	Peru
003	Wayne State College	Wayne
University of Nebraska		
001	University of Nebraska Computing Services	Lincoln

Appendix C—Part 1 PUBLIC K-12 Non-Participant List, as of 7/1/2013:

#	Entity	ESU
001	Arlington Public Schools	3
002	Bellevue Public Schools	3
003	Bennington Public Schools	3
004	Blair Community Schools	3
005	Conestoga Public Schools	3
006	Elkhorn Public Schools	3
007	Elmwood Murdock Public Schools	3
008	Fort Calhoun Community Schools	3
009	Gretna Public Schools	3
010	Millard Public Schools	3
011	Papillion-LaVista Public Schools	3
012	Plattsmouth Public Schools	3
013	Ralston Public Schools	3
014	Westside Community Schools	3
015	Auburn Public Schools	4
016	Humboldt-Table Rock-Steinauer Schools	4
017	Syracuse-Dunbar-Avoca Public Schools	4
018	Crete Public Schools	6
019	Exeter-Milligan Public Schools	6
020	Fillmore Central Public Schools	6
021	Friend Public Schools	6
022	Malcolm Public Schools	6
023	McCool Junction Public Schools	6
024	Seward Public Schools	6
025	Shickley Public Schools	6
026	Wilber-Clatonia Public Schools	6
027	York Public Schools	6
028	South Platte Public Schools	16

#	Entity	Location
001	Educational Service Unit 4	Auburn
002	Educational Service Unit 6	Milford

Appendix D—PUBLIC Higher Education Non-Participant list (7/1/2013)

#	Entity	Location
100% Participation		

Appendix E—Part 2 NON-PUBLIC K-12 Participant List, as of 7/1/2013:

<u>#</u>	<u>Entity</u>	<u>Location</u>
001	Holy Family High School	Lindsay
002	Holy Family Elementary	Lindsay
003	Pope John XXIII High School	Elgin
004	St. Boniface Elementary School	Elgin

Appendix F—Part 2 NON-PUBLIC Higher Education Participant List, as of 7/1/2013:

#	Entity	Location
001	Clarkson College	Omaha
002	College of St. Mary	Omaha
003	Creighton University	Omaha
004	Doane College	Crete
005	Midland University	Fremont
006	Nebraska Wesleyan University	Lincoln
007	Union College	Lincoln

Appendix G—Part 2 NON-PUBLIC K-12 Non-Participant list, as of 7/1/2013:

#	Entity	Location
001	All Saints Catholic School	Omaha
002	Alleluia! Kindergarten	Omaha
003	Aquinas High School	David City
004	Aquinas Middle School	David City
005	Archbishop Bergan Elementary	Fremont
006	Archbishop Bergan High School	Fremont
007	Archbishop Bergan Middle School	Fremont
008	Assumption-Guadalupe Catholic Elementary	Omaha
009	Berniklau Ed Solutions Team	Lincoln
010	Bishop Neumann High School	Wahoo
011	Bishop Neumann High School	Wahoo
012	Blair Christian Academy	Blair
013	Blessed Sacrament Elem School	Lincoln
014	Boys Town High School	Boys Town
015	Brownell Talbot High School	Omaha
016	Brownell Talbot Middle School	Omaha
017	Brownell Talbot Primary School	Omaha
018	Cathedral of the Risen Christ Elementary	Lincoln
019	Cedar Catholic High School	Hartington
020	Central Catholic High School	Grand Island
021	Central Catholic Middle School	Grand Island
022	Child View Montessori	Lincoln
023	Children's Circle Montessori	Lincoln
024	Children's Room	Omaha
025	Christ Elementary School	Lincoln
026	Christ Lutheran Elementary School	Norfolk
027	Christ Lutheran Elementary School	Juniata
028	Christ The King Catholic School	Omaha
029	College View Academy High School	Lincoln
030	College View Academy Elementary	Lincoln
031	Columbus Christian Elementary	Columbus
032	Columbus Sda School	Columbus
033	Community Christian Elementary	Scottsbluff
034	Community Christian Jr High	Scottsbluff
035	Concordia Academy	Omaha
036	Concordia Jr/Sr High School	Omaha
037	Cornerstone Christian Elementary School	Bellevue
038	Cornerstone Christian High School	Bellevue
039	Creighton Preparatory School	Omaha
040	Daniel J Gross Catholic High	Bellevue
041	Deshler Lutheran Elem School	Deshler
042	Duchesne Academy	Omaha
043	East Catholic Elementary School	Hartington
044	Emma Kopecky Elem Day School	Omaha
045	Emmanuel Lutheran Elem School	York
046	Faith Christian Elem/Kearney	Kearney
047	Faith Lutheran School	Lincoln
048	Friedel Jewish Academy	Omaha
049	George Stone Elementary S D A	Lincoln
050	Gethsemane Lutheran Elementary	Omaha

051	Good Shepherd Elementary School	Omaha
052	Good Shepherd Lutheran Elem	Lincoln
053	Grace Lutheran Elementary School	Geneva
054	Grand Island Christian School	Grand Island
055	Guardian Angels Elementary School	West Point
056	Hampton Lutheran Elem School	Hampton
057	Heartland Lutheran High School	Grand Island
058	Holy Cross Catholic School	Omaha
059	Holy Ghost Elementary School	Omaha
060	Holy Name Elementary School	Omaha
061	Holy Trinity Elementary School	Hartington
062	Howells Community Catholic School	Howells
063	Immanuel Lutheran Elem School	Hadar
064	Immanuel Lutheran Elem School	Columbus
065	Jesus Our Savior Lutheran School	Winnebago
066	Kearney Catholic High School	Kearney
067	Kearney Catholic Middle School	Kearney
068	Keystone Christian Elementary	Norfolk
069	Keystone Christian Jr High School	Norfolk
070	Legacy Primary School	Omaha
071	Lifegate Christian School	Omaha
072	Lincoln Christian Elem School	Lincoln
073	Lincoln Christian JR-SR High	Lincoln
074	Lincoln Lutheran High School	Lincoln
075	Lincoln Lutheran Middle School	Lincoln
076	Lincoln Montessori School	Lincoln
077	Lourdes Central High School	Nebraska City
078	Lourdes Central Middle School	Nebraska City
079	Lourdes Primary School	Nebraska City
080	Lutheran High Northeast	Norfolk
081	Madonna School	Omaha
082	Marian High School	Omaha
083	Mary Our Queen Elem School	Omaha
084	McDaid Elementary School	North Platte
085	Mercy High School	Omaha
086	Messiah Lutheran Elementary School	Lincoln
087	Montessori Learning Center Of Dundee	Omaha
088	Montessori Parent's Co-Op	Omaha
089	Mt Calvary Lutheran Elem School	Omaha
090	Mt Michael Benedictine H S	Elkhorn
091	N H Wegner School	Boys Town
092	Nebraska Christian Jr High School	Central City
093	Nebraska Christian Elementary	Central City
094	Nebraska Christian High	Central City
095	Nebraska Evangelical Lutheran High	Waco
096	New Hope Christian Elem School	Cairo
097	Norfolk Catholic High School	Norfolk
098	North American Martyrs School	Lincoln
099	Omaha Christian Middle School	Omaha
100	Omaha Christian Elementary	Omaha
101	Omaha Christian High School	Omaha
102	Omaha Memorial School Of S D A	Omaha
103	Omaha Street School	Omaha

104	Our Lady Of Lourdes Elem School	Omaha
105	Our Redeemer Lutheran Elem School	Staplehurst
106	Park Avenue Christian Elem	Norfolk
107	Park Avenue Christian Jr High	Norfolk
108	Parkview Christian Elementary	Lincoln
109	Parkview Christian Middle School	Lincoln
110	Parkview Christian Secondary	Lincoln
111	Phoenix Academy Elem Day School	Omaha
112	Phoenix Academy MS Day School	Omaha
113	Pius X High School	Lincoln
114	Platte Valley Christian Academy	North Platte
115	Platte Valley Elementary	Grand Island
116	Polk Co Christian Elem School	Osceola
117	Prairie Hill Learning Center	Roca
118	Prairie View S D A School	Chadron
119	Primrose School Of Legacy	Omaha
120	Roncalli Catholic High School	Omaha
121	Sacred Heart Elem School	Lincoln
122	Sacred Heart Elementary	Norfolk
123	Sacred Heart Elementary School	Omaha
124	Sacred Heart Elementary School	Falls City
125	Sacred Heart Secondary School	Falls City
126	Scotus Central Catholic	Columbus
127	Skutt Catholic High School	Omaha
128	Spalding Academy Elem School	Spalding
129	Spalding Academy High School	Spalding
130	St Agnes Academy	Alliance
131	St Agnes Elementary School	Scottsbluff
132	St Andrew Elementary School	Tecumseh
133	St Anthony Elementary School	Columbus
134	St Augustine Elementary School	Winnebago
135	St Bernadette Elementary School	Omaha
136	St Bernard Elementary School	Omaha
137	St Bonaventure Elem School	Columbus
138	St Cecilia Cathedral Elem	Omaha
139	St Cecilia High School	Hastings
140	St Cecilia Middle School	Hastings
141	St Columbkille Elementary School	Papillion
142	St Francis Elementary School	Humphrey
143	St Francis High School	Humphrey
144	St Gerald Elementary School	Ralston
145	St Isidore Elementary School	Columbus
146	St James Elementary School	Crete
147	St James-Seton Elementary School	Omaha
148	St Joan Of Arc Elementary School	Omaha
149	St John Lutheran Elem School	Battle Creek
150	St John Lutheran Elem School	Seward
151	St John Nepomucene Elem School	Weston
152	St John Neumann Elementary School	Clarkson
153	St John The Baptist Elementary	Plattsmouth
154	St John's Elementary School	Lincoln
155	St Joseph Elementary School	Beatrice
156	St Joseph's Catholic School	Lincoln

157	St Joseph's Elementary School	Atkinson
158	St Leonard's Elementary School	Madison
159	St Ludger Elementary School	Creighton
160	St Luke Elementary School	Ogallala
161	St Margaret Mary Elem School	Omaha
162	St Mark Elementary School	Lincoln
163	St Mary Elementary School	Bellevue
164	St Mary's Elementary School	O'Neill
165	St Mary's Elementary School	Lincoln
166	St Mary's Elementary School	David City
167	St Mary's High School	O'Neill
168	St Matthew The Evangelist School	Bellevue
169	St Michael Catholic School	Lincoln
170	St Michael Elementary School	So Sioux City
171	St Michael Elementary School	Hastings
172	St Michael's Elementary School	Albion
173	St Patrick's Catholic Elem School	Elkhorn
174	St Patrick's Elementary School	Lincoln
175	St Patrick's JR-SR High School	North Platte
176	St Paul Lutheran Elem School	West Point
177	St Paul's Lutheran Elem School	Utica
178	St Peter's Catholic School	Lincoln
179	St Philip Neri Elem School	Omaha
180	St Pius X / St Leo Elementary	Omaha
181	St Robert Bellarmine Elem	Omaha
182	St Rose Of Lima Elem School	Crofton
183	St Stanislaus Elem School	Omaha
184	St Stephen The Martyr School	Omaha
185	St Teresa Elementary School	Lincoln
186	St Thomas More Elem School	Omaha
187	St Vincent De Paul Elementary	Omaha
188	St Vincent Depaul Catholic School	Seward
189	St Wenceslaus Elem School	Dodge
190	St Wenceslaus Elementary School	Wahoo
191	St Wenceslaus School	Omaha
192	Sts Peter & Paul Elem School	Omaha
193	Sutton Christian School	Sutton
194	The Jesuit Academy	Omaha
195	Trinity Kindergarten Program	Lincoln
196	Trinity Lutheran Elem School West	Fremont
197	Trinity Lutheran Elem School East	Fremont
198	Trinity Lutheran Elem School	Hoskins
199	Trinity Lutheran Elem School	Grand Island
200	Trinity Lutheran Grade School	Waco
201	Trinity Tiny Tot's Pre-Kdg	Hoskins
202	Trunk Butte Christian Academy	Chadron
203	Valley View Sda Christian School	Scottsbluff
204	Villa Marie School	Waverly
205	West Catholic Elementary School	Fordyce
206	West Point Central Catholic HS	West Point
207	Word Of Life Christian School	O'Neill
208	Zion Lutheran Elementary School	Pierce
209	Zion St John Lutheran School	Wisner

Appendix H—Part 2 NON-PUBLIC Higher Education Non-Participant list, as of 7/1/2013:

#	Entity	Location
001	Bellevue University	Bellevue
002	Bryan College of Health Sciences	Lincoln
003	Concordia University	Seward
004	Grace University	Omaha
005	Hastings College	Hastings
006	Nebraska Methodist College	Omaha
007	York College	York

What is LB 1208?--now codified in Nebraska Statutes, as cited below.

LB 1208 was co-introduced on January 18, 2006 by Senators Raikes, Pederson, Baker, and Stuhr. This bill embodied many of the recommendations contained in the final report of the Distance Education Enhancement Task Force, which met from July to December, 2005. (listed under Education Committee reports; 20MB, 103 pgs).

http://nebraskalegislature.gov/pdf/reports/committee/education/LB689_2005.pdf

LB 1208 was heard in the Education Committee on 2/13/06 and was voted out of committee on a 7-1 vote. Thirteen persons testified in favor and one person testified as neutral. On 4/13/06, LB 1208 and LB 1208A were passed by the Legislature and were then signed into law by the Governor (Search 'Final 1208' under the 99th Session; 72 pgs).

http://nebraskalegislature.gov/bills/search_past.php

The distance education improvement plan was centered on three general principles. First, the plan recognized the responsibility of school districts, ESUs, and public postsecondary education institutions to make decisions related to participation in distance education. Second, the plan encouraged and incentivized the exchange of distance education courses using a statewide network, known as Network Nebraska. Third, the plan provided for statewide coordination through a new entity, the Distance Education Council (renamed ESU Coordinating Council, 7/1/08).

An overview of the significant provisions of the distance education improvement plan follows, with language lifted from the Nebraska Revised Statutes:

Policy

- The Chief Information Officer (CIO) shall provide access to each school district, ESU, community college, state college, and the University of Nebraska at the earliest feasible date and no later than July 1, 2012. The network shall...meet the demand of state agencies, local governments, and educational entities, as defined in 79-1201.01(3). [Neb.Rev.Stat. 86-5,100]
- The CIO shall may (LB1071--2010) bid for such equipment and software and shall allow education entities¹ to participate in such statewide leasing or purchasing contracts. [Neb.Rev.Stat. 86-520.01]
- Interlocal agreements forming distance education consortia shall terminate on June 30, 2007. On July 1, 2007, educational service units shall assume responsibility for distance education services that are, on the effective date of this act, being provided to member school districts through a distance education consortium. [Neb.Rev.Stat. 79-1331—Repealed LB 1071, 2010]
- On or before December 31, 2006, each distance education consortium shall hold a meeting of the superintendents of all participating school districts to choose an educational service unit to be the successor in interest for the assets and liabilities of the distance education consortium by a majority vote of the superintendents present at the meeting. All assets and liabilities, including staff and contracts with service providers, shall be transferred to such educational service unit on July 1, 2007. [Neb.Rev.Stat. 79-1331—Repealed LB 1071, 2010]
- The (Distance Education) council (renamed ESU Coordinating Council, 7/1/08) shall not approve purchases of the council in excess of \$10,000 without approval of the Technical Panel of the NITC that the purchases are in compliance with any applicable commission standards. [Neb.Rev.Stat. 79-1249--Repealed LB 1071, 2010]
- Information technology purchases made with state funds or local tax receipts by education-related political subdivisions shall meet or exceed any applicable technical standards established by the commission [Neb.Rev.Stat. 86-520.01].
- The State Board of Education shall promulgate rules related to equipment reimbursement and section distance education incentives. [Neb.Rev.Stat. 79-1337].
- For school year 2009-10 and each school year thereafter, a school board of a school district shall not establish an alternating biennial secondary course offering in any subject area for which the State Board of Education has adopted content standards pursuant to section 79-760.01. [Neb.Rev.Stat. 79-704]
- Each educational service unit shall provide access for all school districts within the geographical area served by the unit to telecomputing resources, which shall include the capacity to receive and transmit distance education courses on at least a regional basis beginning on or before August 1, 2007, through the installation of necessary equipment at each educational service unit location or through interlocal agreements with other educational

service units and shall provide support for training users to meet their specific telecomputing and distance education needs. [Neb.Rev.Stat. 79-1233]

Funding

- School districts and ESUs will be eligible to receive equipment reimbursements of up to \$20,000 from the Education Innovation Fund (NDE) beginning the first year of access to Network Nebraska and ending in 2013 for hardware and software (and installation) purchases made after July 14, 2006. School districts would be required to send or receive the equivalent of at least two synchronous video courses each year for four years or risk forfeiture of funds. [Neb.Rev.Stat. 79-1336]
- For fiscal years 2007-08 through 2015-16, NDE shall provide distance education incentives from the Education Innovation Fund to school districts and ESUs for qualified distance education courses. Each unit of distance learning would be worth up to \$1,000 and be paid one year in arrears. [Neb.Rev.Stat. 79-1337]
 - The formula for incentives will be based on ONE unit for SENDING a synchronous video or an internet-based distance education course;
 - ONE unit for RECEIVING a synchronous video course; and
 - ONE extra unit for SENDING a synchronous video course that reaches a sparse or very sparse school district.
- A technology allowance will be added to the Tax Equity and Educational Opportunities Support Act for school district access and transport charges equal to 85% of the difference between local system costs and the federal reimbursements from the E-rate program. [Neb.Rev.Stat. 79-1007.14]
- A technology allowance will be added to the minimum allocation in the ESU infrastructure funding formula for access and transport charges equal to 85% of the difference between ESU costs and federal reimbursements from the E-rate program. [Neb.Rev.Stat. 79-1241.03(2a)]
- Funding of approximately \$185,000 per year is provided to the Distance Education Council (renamed ESU Coordinating Council, 7/1/08) from the Legislature (through NDE) to carry out its responsibilities of distance education scheduling and training, maintaining an event clearinghouse, and administration of a learning management system. [Neb.Rev.Stat. 79-1245, 79-1247]
- Funding of approximately \$1,432,000 is provided to the Distance Education Council (renamed ESU Coordinating Council, 7/1/08) from the Legislature (through NDE) for a scheduling system for distance education courses and related maintenance, which shall only be used for such purpose. [LB1208A, 1999]
- Receipts for courses shared with other school districts will be excluded from accountable receipts in the local budget limitation and from the state aid formula. [Neb.Rev.Stat. 79-1028.01 (2b)]
- The Attracting Excellence to Teaching Program Act Fund would be funded from FY 2006-07 (\$250,000) to FY 2007-2008 (\$500,000) to FY 2008-2009 (\$750,000) to FY 2009-10 (\$1,000,000) with level funding at \$1,000,000 through FY2015-16. [Neb.Rev.Stat. 9-812]

Coordination

- The (Distance Education) Council (renamed ESU Coordinating Council, 7/1/08) shall be composed of one administrator or his or her designee from each ESU. Coordination will include brokering of courses, scheduling and prioritization of courses, assessment of distance education needs, administration of learning management systems, and evaluation of distance education services. [Neb.Rev.Stat. 79-1248, 79-1249]
- The Distance Education Council will be required to have representation on either the NITC Education Council, the Technical Panel, or the NITC, or the governor shall appoint one member to the NITC. [Neb.Rev.Stat. 86-515(1)]

¹Education Entity (N.R.S. 79-1201.01): (3) Educational entity means a school district, a private, denominational, or parochial school, an educational service unit, a community college, a state college, the University of Nebraska, or a nonprofit private postsecondary educational institution...

More information about LB 1208, the implementation plan, and implications for education entities can be obtained by contacting Tom Rolfes at the Office of the Chief Information Officer, 402-471-7969, or tom.rolfes@nebraska.gov.